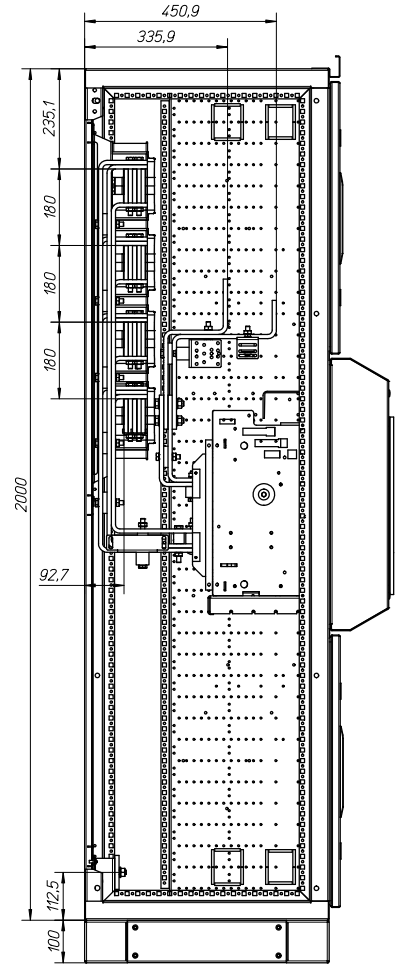
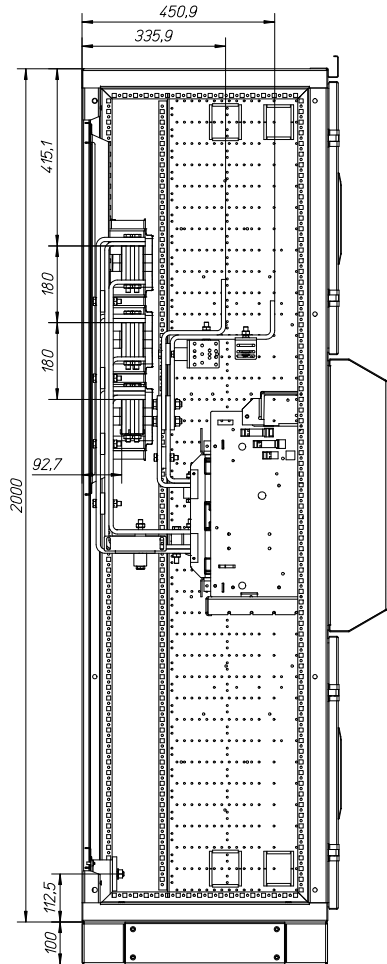
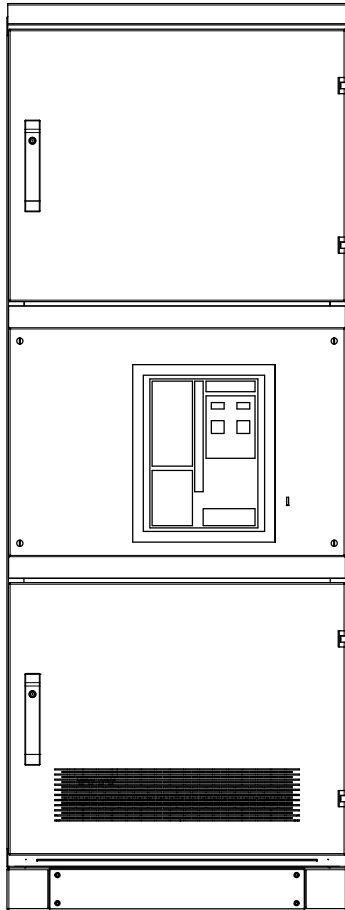


Einspeise-, Abgangsfeld IZM32 Ausfahreinheit 3200A Gl.S. Oben incoming-, outgoing unit IZM32 withdrawable 3200A EVEN-Top Aufbau Feld / installation field

3-polig/ 3-pole

4-polig/ 4-pole



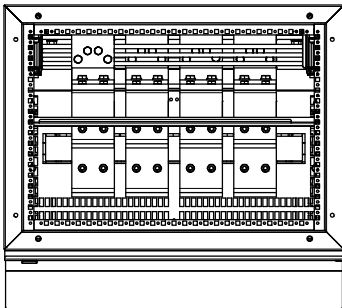
xEnergy Feld / field 2000x600/800x600

Einbausatz / mounting kit: IZM32

IZM32-1

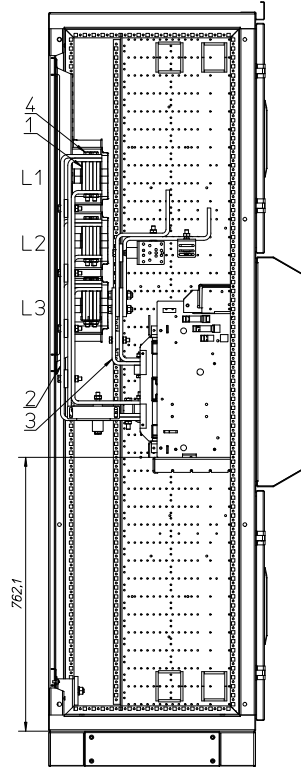
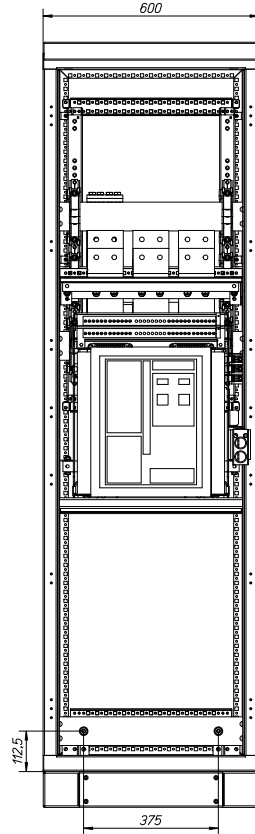
Bemessungsstrom / Current Rating (I): 3200A

Material der Cu-Schienen / busbar material: EN 13601-Cu-ETP-R250
(ersetzt / replaced: DIN 40500 / 46433 E-Cu 57, F25)

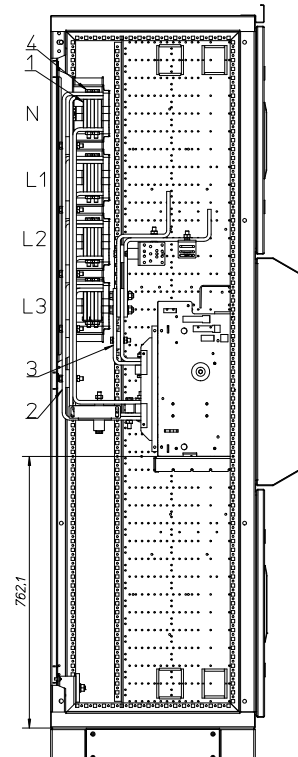
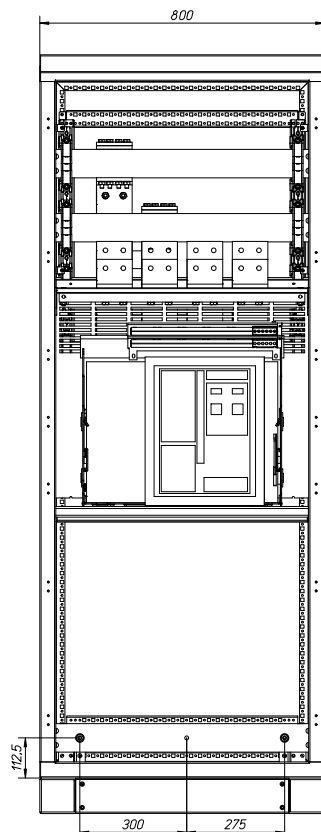


Einspeise-, Abgangsfeld IZM32 Ausfahreinheit 3200A Gl.S. Oben
incoming-, outgoing unit IZM32 withdrawable 3200A EVEN-Top
Eingangsschienenverbindung / incoming connection

3-polig / 3-pole



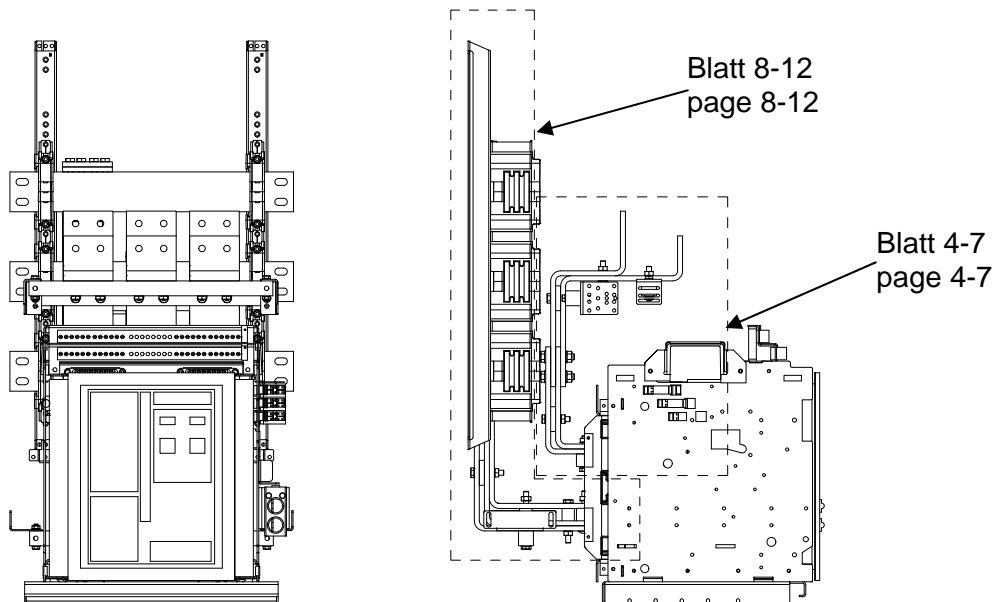
4-polig / 4-pole



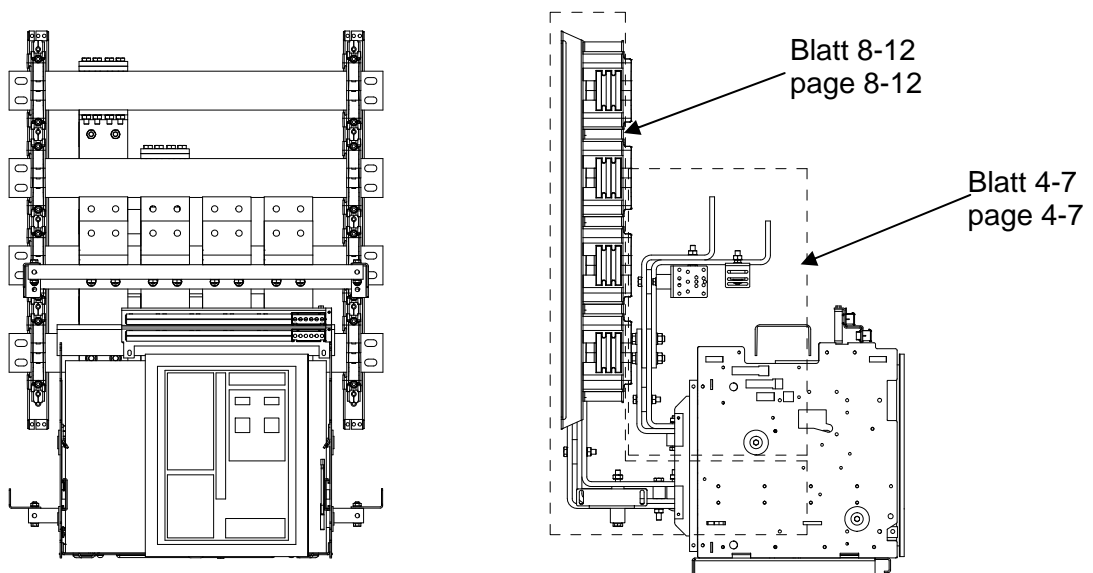
Einspeise-, Abgangsfeld IZM32 Ausfahreinheit 3200A Gl.S. Oben
incoming-, outgoing unit IZM32 withdrawable 3200A EVEN-Top
Anschluss Schalter - Gesamtansicht / switch connection - overview

Pos. no.	Benennung name	Beschreibung specification	Montagematerial/Zubehör Installation material/ comonents
1	Hauptsammelschiene main busbar		
2	Abgangssammelschiene outgoing busbar	3x100x10 mm	Blatt 8-12 Page 8-12
3	Eingangssammelschiene incoming busbar	2x100x10 mm	Blatt 4-7 Page 4-7
4	Sammelschienenverbindung busbar connection		Blatt 8-12 Page 8-12

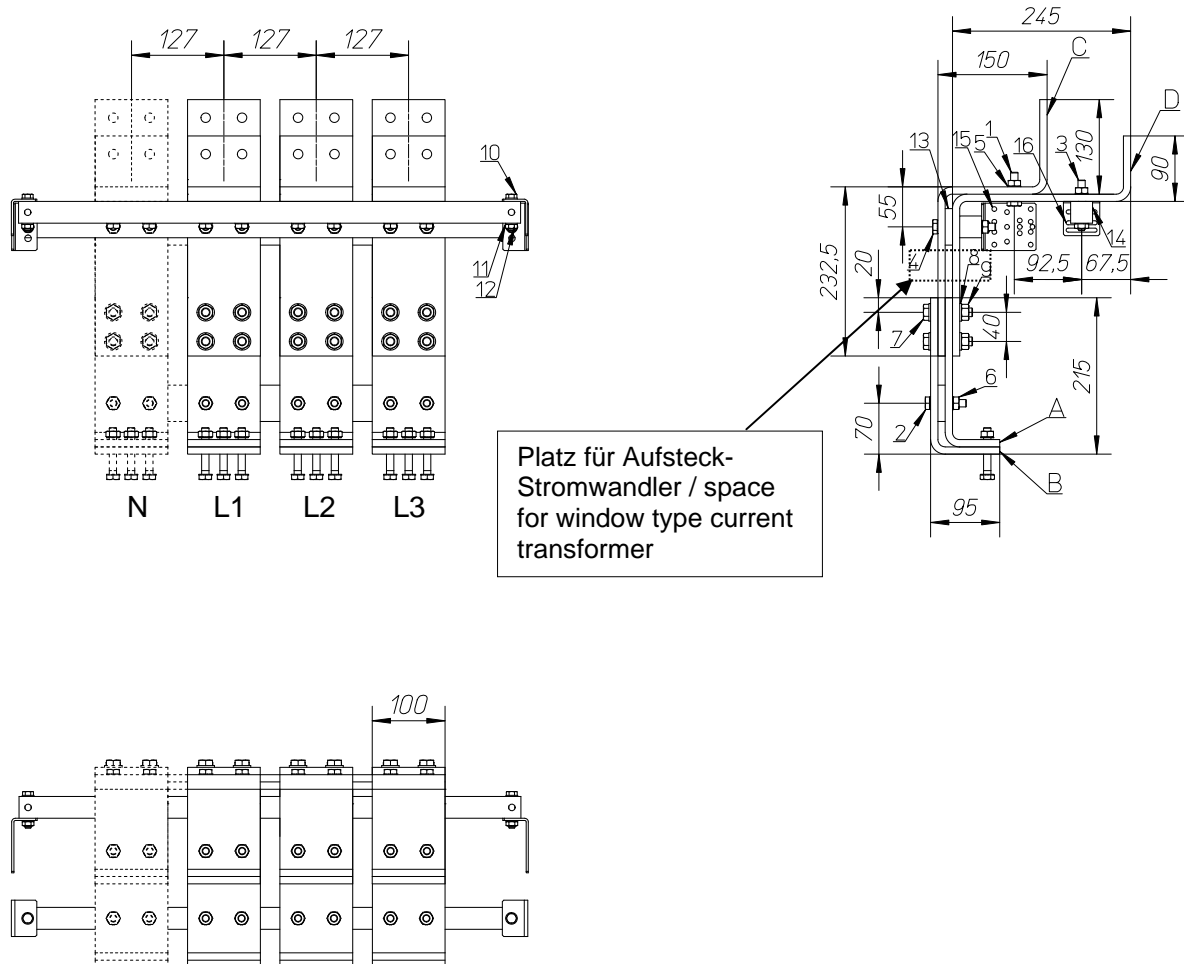
3-polig / 3-pole



4-polig / 4-pole



Einspeise-, Abgangsfeld IZM32 Ausfahreinheit 3200A Gl.S. Oben
incoming-, outgoing unit IZM32 withdrawable 3200A EVEN-Top
Eingangsschienenverbindung / incoming connection



Kupfer / copper 100mm x 10mm
Gestreckte Längen* / flat length*

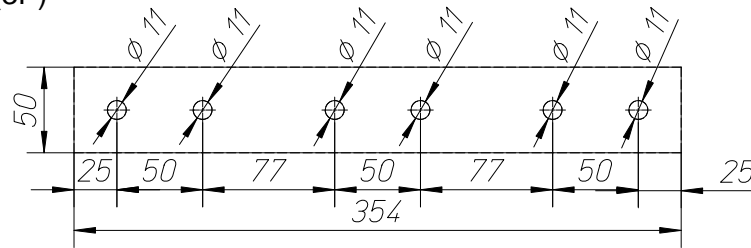
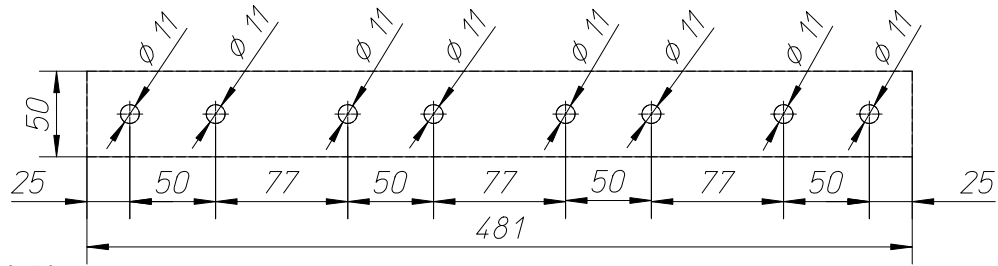
Schiene busbar	Gestreckte Länge N flat length N	Gestreckte Länge L1 flat length L1	Gestreckte Länge L2 flat length L2	Gestreckte Länge L3 flat length L3
A	263,4mm	263,4mm	263,4mm	263,4mm
B	293,4mm	293,4mm	293,4mm	293,4mm
C	479,3mm	479,3mm	479,3mm	479,3mm
D	524,3mm	524,3mm	524,3mm	524,3mm

*Radius R10

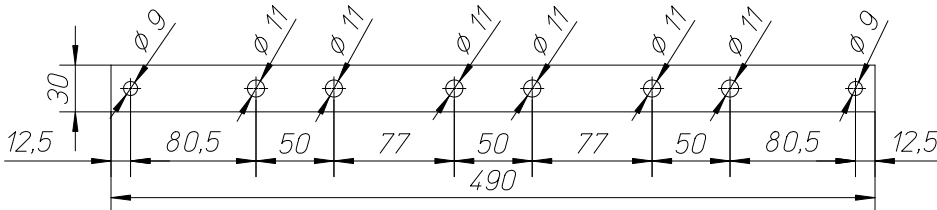
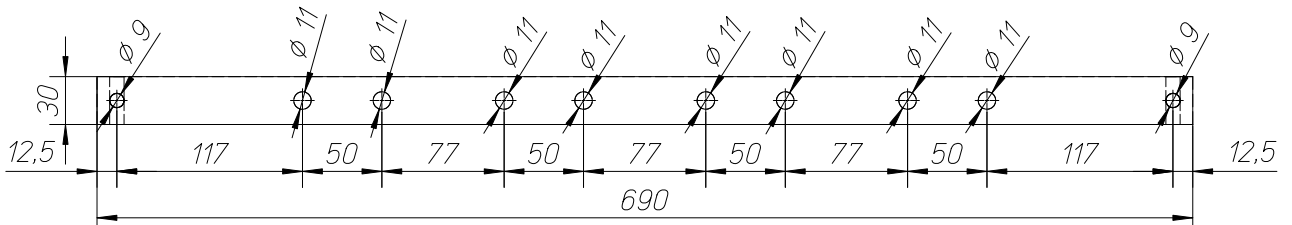
Biegeverkürzung / correction factor: +3,4mm

Einspeise-, Abgangsfeld IZM32 Ausfahreinheit 3200A Gl.S. Oben
incoming-, outgoing unit IZM32 withdrawable 3200A EVEN-Top
Eingangsschienenverbindung / incoming connection

Pos. / No. 13
Stabilisator
stabilizer
50x10x481 / 354(3P)



Pos. / No. 14
Stabilisator
stabilizer
30x30x690 / 490(3P)



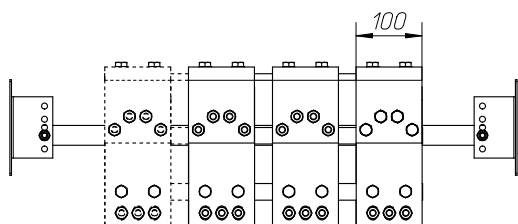
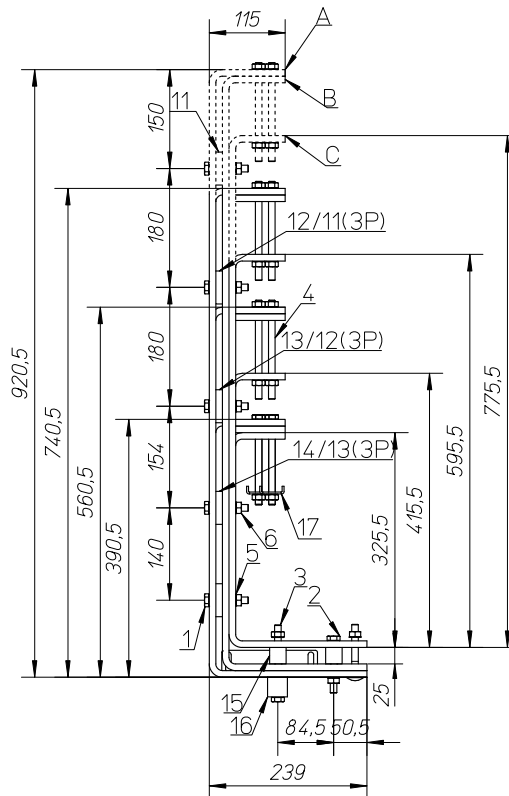
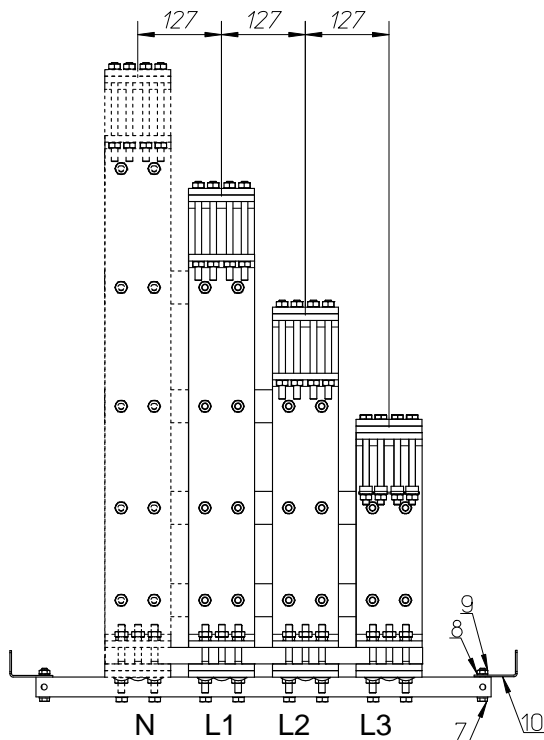
Einspeise-, Abgangsfeld IZM32 Ausfahreinheit 3200A Gl.S. Oben
incoming-, outgoing unit IZM32 withdrawable 3200A EVEN-Top
Stückliste Eingangsschienenverbindung / parts list incoming connection

Pos. no.	Menge quantity		Benennung name	Beschreibung specification	Bild picture
	3P	4P			
1	6 Stk/pcs	8 Stk/pcs	Sechskantschraube Hexagon head cap screw	DIN EN 24014 M10 x 40 – 8.8	
2	6 Stk/pcs	8 Stk/pcs	Sechskantschraube Hexagon head cap screw	DIN EN 24014 M10 x 50 – 8.8	
3	6 Stk/pcs	8 Stk/pcs	Sechskantschraube Hexagon head cap screw	DIN EN 24014 M10 x 60 – 8.8	
4	6 Stk/pcs	8 Stk/pcs	Sechskantschraube Hexagon head cap screw	DIN EN 24014 M10 x 80 – 8.8	
5	48 Stk/pcs	64 Stk/pcs	Spannscheibe Conical spring washer for bolted connections	DIN 6796-10-FST	
6	24 Stk/pcs	32 Stk/pcs	Sechskantmutter Hexagon nut	DIN EN 24032 M10 – 8.8	
7	12 Stk/pcs	16 Stk/pcs	Sechskantschraube Hexagon head cap screw	DIN EN 24014 M12 x 60 – 8.8	
8	24 Stk/pcs	32 Stk/pcs	Spannscheibe Conical spring washer for bolted connections	DIN 6796-12-FST	
9	12 Stk/pcs	16 Stk/pcs	Sechskantmutter Hexagon nut	DIN EN 24032 M12 – 8.8	
10	4 Stk/pcs	4 Stk/pcs	Sechskantschraube Hexagon head cap screw	DIN EN 24014 M8 x 45 – 8.8	
11	8 Stk/pcs	8 Stk/pcs	Spannscheibe Conical spring washer for bolted connections	DIN 6796-8-FST	
12	4 Stk/pcs	4 Stk/pcs	Sechskantmutter Hexagon nut	DIN EN 24032 M8 – 8.8	
13	2 Stk/pcs	2 Stk/pcs	Stabilisator 50x10x481 / 354(3P) stabilizer 50x10x481 / 354(3P)	HM2471 DIN7735	
14	2 Stk/pcs	2 Stk/pcs	Stabilisator 30x30x690 /490(3P) Stabilizer 30x30x690 /490(3P)	HM2471 DIN7735	
15	2 Stk/pcs	2 Stk/pcs	Befestigungswinkel Fixing Bracket	XNBW-G06 BI 3,0 DIN59232 ST 02 Z275	
16	2 Stk/pcs	2 Stk/pcs	Befestigungswinkel Fixing Bracket	XNBW-G BI 3,0 DIN59232 ST 02 Z275	

Anzugsdrehmomente / stud torque

Gewindegröße Screw Size	Fertigung Mounting	Prüfung Test
M8	20 Nm	17 Nm
M10	40 Nm	37 Nm
M12	70 Nm	67 Nm

Einspeise-, Abgangsfeld IZM32 Ausfahreinheit 3200A Gl.S. Oben
incoming-, outgoing unit IZM32 withdrawable 3200A EVEN-Top
Abgangsschienenverbindung / outgoing connection



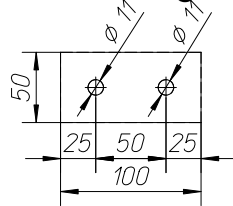
Kupfer / copper 100mm x 10mm Gestreckte Längen* / flat length*				
Schiene busbar	Gestreckte Länge N flat length N Tiefe / depth	Gestreckte Länge L1 flat length L1 Tiefe / depth	Gestreckte Länge L2 flat length L2 Tiefe / depth	Gestreckte Länge L3 flat length L3 Tiefe / depth
	600	600	600	600
A	1241,3mm	1061,3mm	881,3mm	711,3mm
B	1181,3mm	1001,3mm	821,3mm	651,3mm
C	1036,3mm	856,3mm	676,3mm	586,3mm

*Radius R10

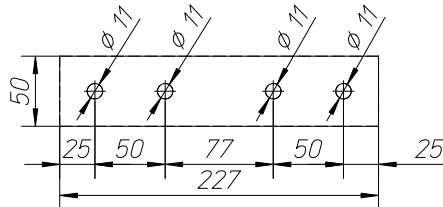
Biegeverkürzung / correction factor: +3,4mm

Einspeise-, Abgangsfeld IZM32 Ausfahreinheit 3200A Gl.S. Oben
incoming-, outgoing unit IZM32 withdrawable 3200A EVEN-Top
Abgangsschienenverbindung / outgoing connection

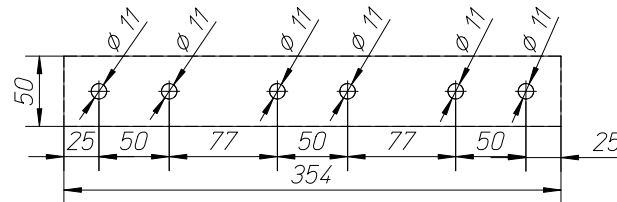
Pos. / No. 11
Stabilisator
stabilizer
50x10x100



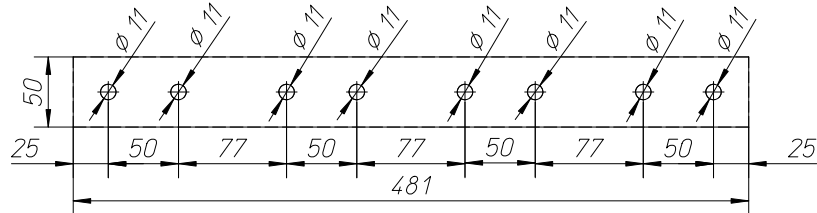
Pos. / No. 12
Stabilisator
stabilizer
50x10x227



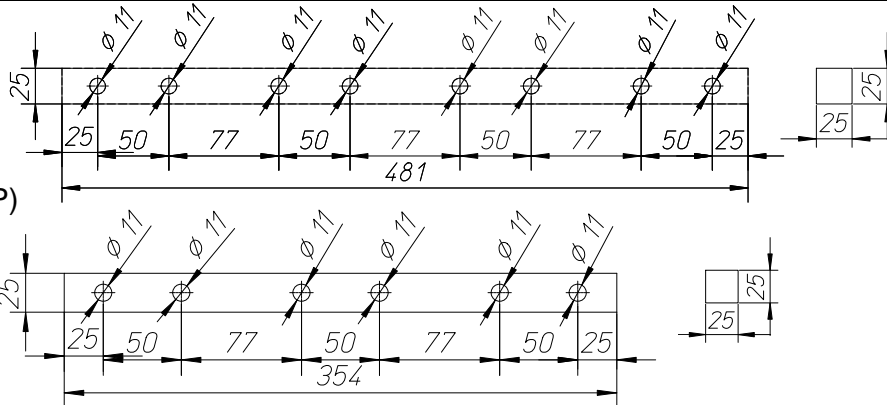
Pos. / No. 13
Stabilisator
stabilizer
50x10x354



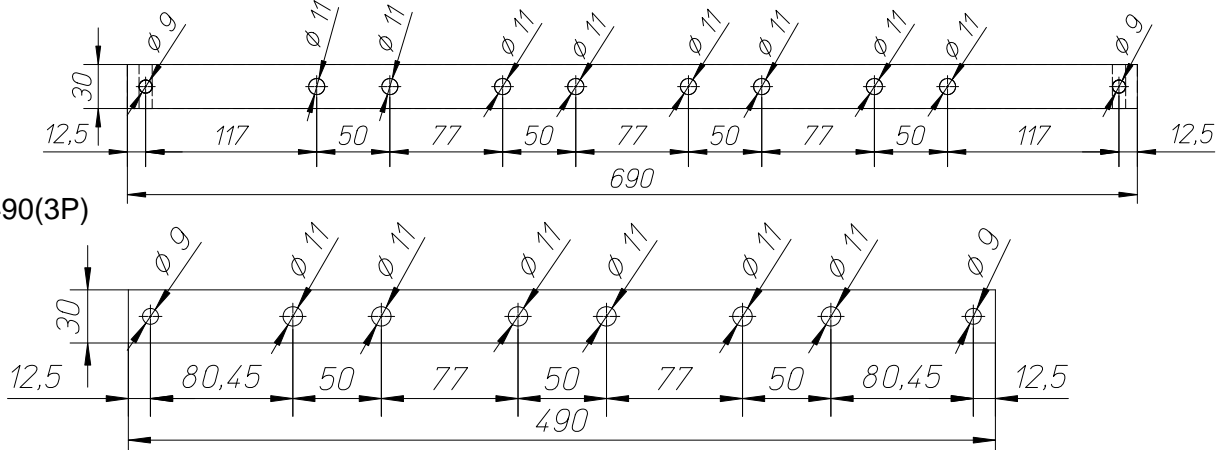
Pos. / No. 14
Stabilisator
stabilizer
50x10x481



Pos. / No. 15
Stabilisator
stabilizer
25x25x481 / 354(3P)



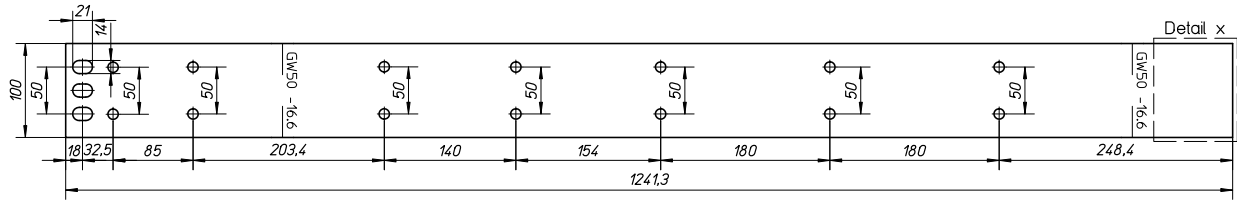
Pos. / No. 16
Stabilisator
stabilizer
30x30x690 / 490(3P)



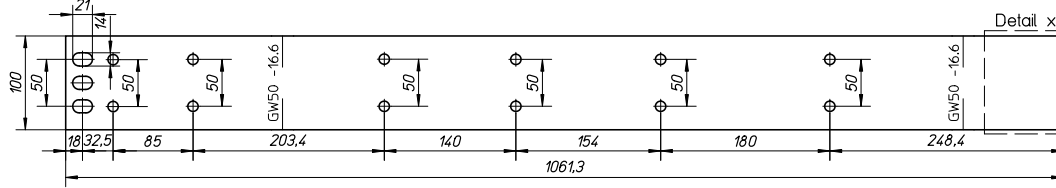
Einspeise-, Abgangsfeld IZM32 Ausfahreinheit 3200A Gl.S. Oben incoming-, outgoing unit IZM32 withdrawable 3200A EVEN-Top

Gestreckte Längen Tiefe / flat length depth

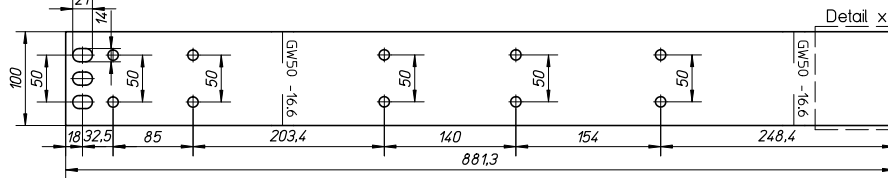
A:
N



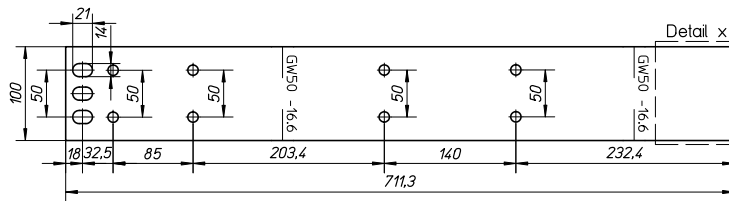
L1



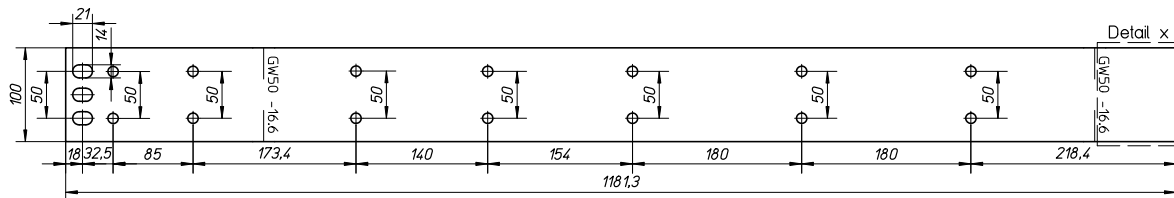
L2



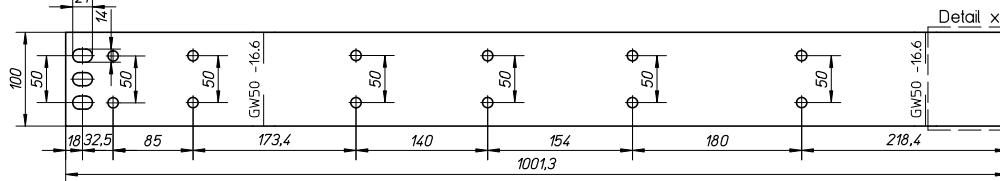
L3



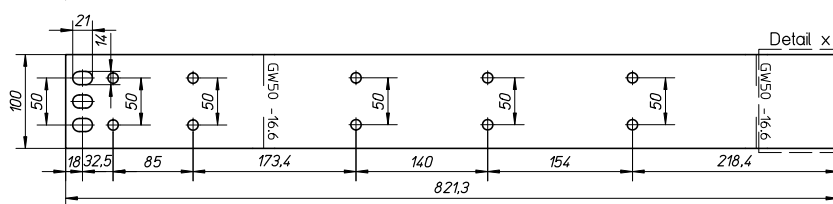
B:
N



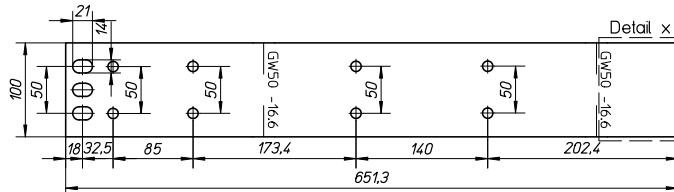
L1



L2



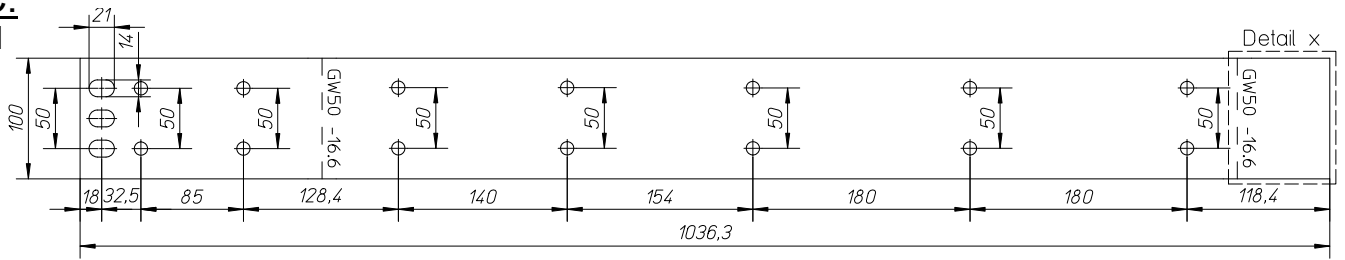
L3



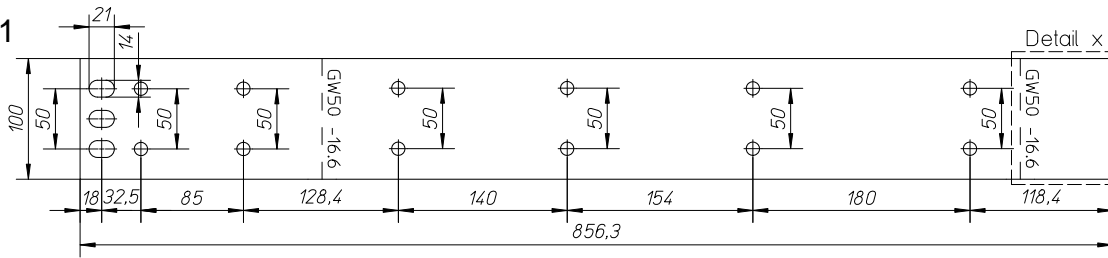
Einspeise-, Abgangsfeld IZM32 Ausfahreinheit 3200A Gl.S. Oben incoming-, outgoing unit IZM32 withdrawable 3200A EVEN-Top

Gestreckte Längen Tiefe / flat length depth

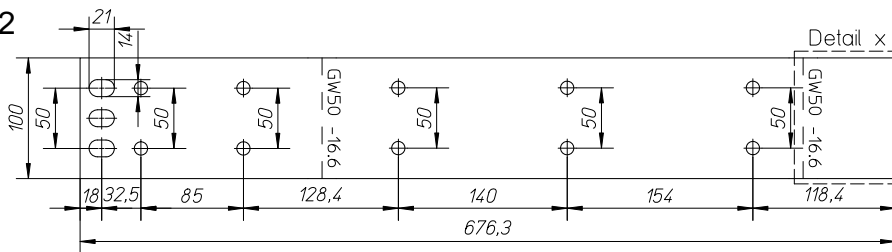
C:
N



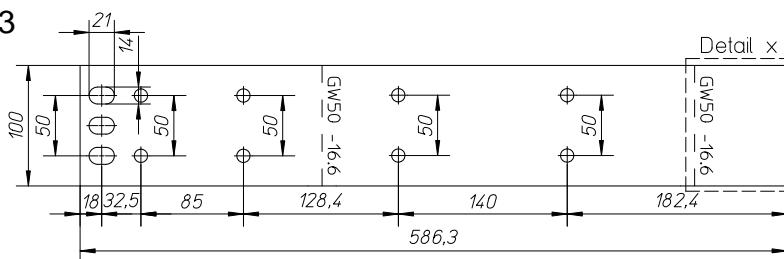
L1



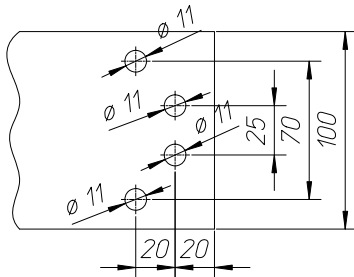
L2



L3



Detail
HSS mit 3 Cu-Schienen
Main busbar with 3 Cu-bars



Einspeise-, Abgangsfeld IZM32 Ausfahreinheit 3200A Gl.S. Oben
incoming-, outgoing unit IZM32 withdrawable 3200A EVEN-Top
Stückliste Abgangsschienenverbindung / parts list outgoing connection

Pos. no.	Menge quantity Tiefe / depth 600		Benennung name	Beschreibung specification	Bild picture
	3P	4P			
	1	18 Stk/pcs			
2	6 Stk/pcs	8 Stk/pcs	Sechskantschraube Hexagon head cap screw	DIN EN 24014 M10 x 80 – 8.8	
3	6 Stk/pcs	8 Stk/pcs	Sechskantschraube Hexagon head cap screw	DIN EN 24014 M10 x 110 – 8.8	
4	12 Stk/pcs	16 Stk/pcs	Stiftschraube Stud screw	DIN 939 M10x140 – 8.8	
5	108 Stk/pcs	152 Stk/pcs	Spannscheibe Conical spring washer for bolted connections	DIN 6796-10-FST	
6	54 Stk/pcs	76 Stk/pcs	Sechskantmutter Hexagon nut	DIN EN 24032 M10 – 8.8	
7	2 Stk/pcs	2 Stk/pcs	Sechskantschraube Hexagon head cap screw	DIN EN 24014 M8 x 45 – 8.8	
8	4 Stk/pcs	4 Stk/pcs	Spannscheibe Conical spring washer for bolted connections	DIN 6796-8-FST	
9	2 Stk/pcs	2 Stk/pcs	Sechskantmutter Hexagon nut	DIN EN 24032 M8 – 8.8	
10	2 Stk/pcs	2 Stk/pcs	Befestigungswinkel Fixing Bracket	XNBW-E06 BI 3,0 DIN59232 ST 02 Z275	
11	1 Stk/pcs	1 Stk/pcs	Stabilisator 50x10x100 stabilizer 50x10x100	HM2471 DIN7735	
12	1 Stk/pcs	1 Stk/pcs	Stabilisator 50x10x227 stabilizer 50x10x227	HM2471 DIN7735	
13	2 Stk/pcs	1 Stk/pcs	Stabilisator 50x10x354 stabilizer 50x10x354	HM2471 DIN7735	
14	-	2 Stk/pcs	Stabilisator 50x10x481 stabilizer 50x10x481	HM2471 DIN7735	
15	2 Stk/pcs	2 Stk/pcs	Stabilisator 25x25x481 / 354 (3P) Stabilizer 25x25x481 / 354 (3P)	HM2471 DIN7735	
16	1 Stk/pcs	1 Stk/pcs	Stabilisator 30x30x690 / 490(3P) Stabilizer 30x30x690 / 490(3P)	HM2471 DIN7735	
17	4 Stk/pcs	4 Stk/pcs	Cu-Bügel Copper Clamps	XNCB EN 13601-Cu-ETP- R250	

Anzugsdrehmomente / stud torque

Gewindegröße Screw Size	Fertigung Mounting	Prüfung Test
M8	20 Nm	17 Nm
M10	40 Nm	37 Nm