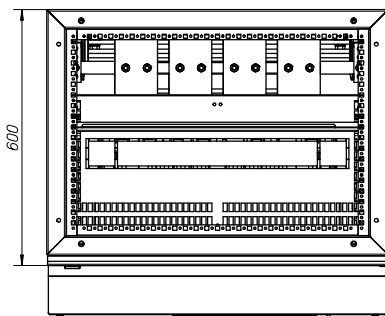
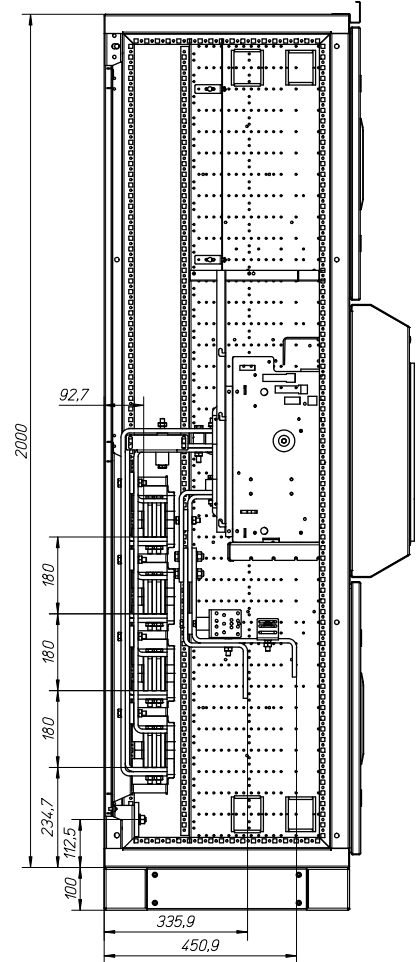
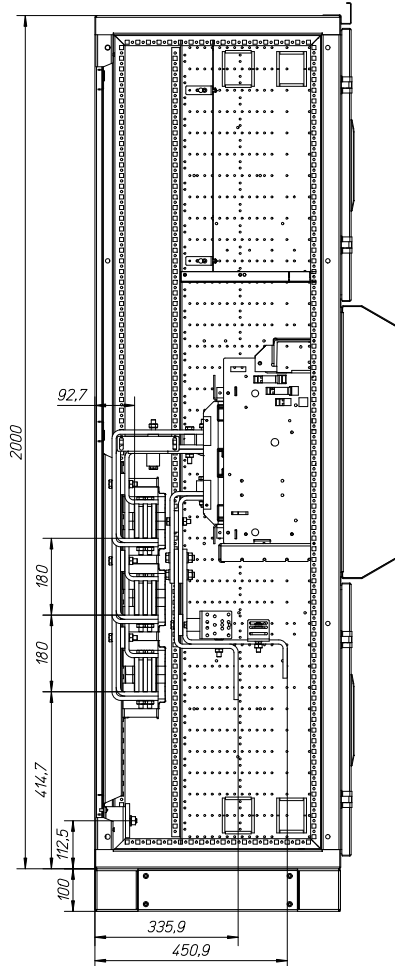
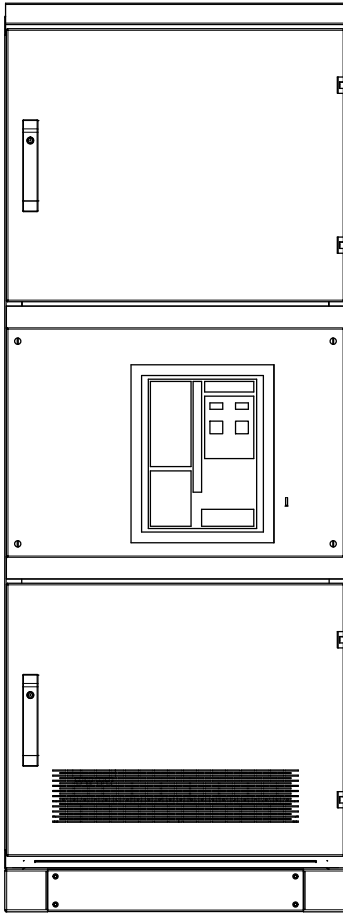


Einspeise-, Abgangsfeld IZM32 Ausfahreinheit 3200A Gl.S. Unten incoming-, outgoing unit IZM32 withdrawable 3200A EVEN-Bottom Aufbau Feld / installation field

3-polig/ 3-pole

4-polig/ 4-pole



xEnergy Feld / field 2000x600/800x600

Einbausatz / mounting kit: IZM32

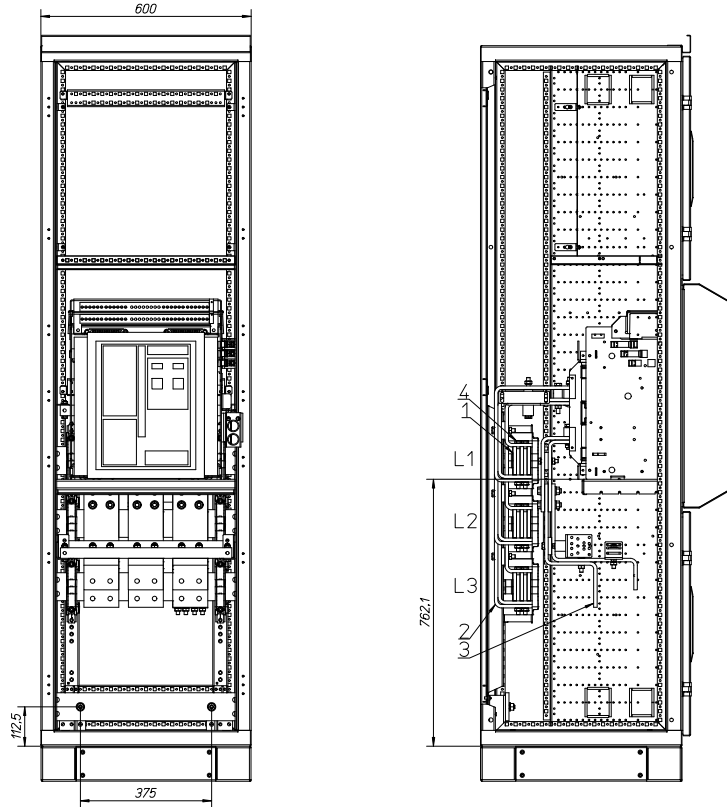
IZM32-1

Bemessungsstrom / Current Rating (I): 3200A

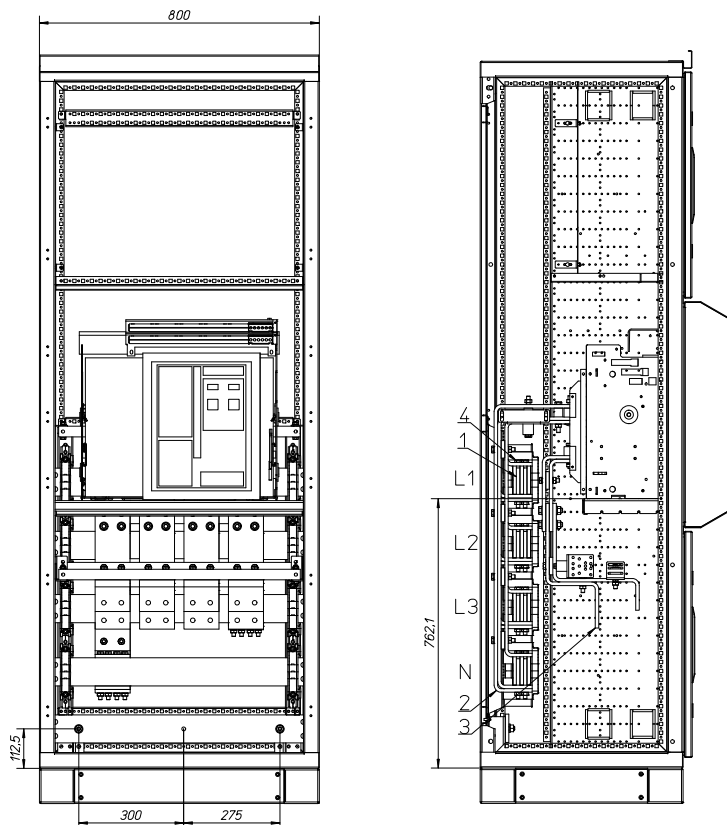
Material der Cu-Schienen / busbar material: EN 13601-Cu-ETP-R250
(ersetzt / replaced: DIN 40500 / 46433 E-Cu 57, F25)

Einspeise-, Abgangsfeld IZM32 Ausfahreinheit 3200A Gl.S. Unten
incoming-, outgoing unit IZM32 withdrawable 3200A EVEN-Bottom
Eingangsschienenverbindung / incoming connection

3-polig / 3-pole



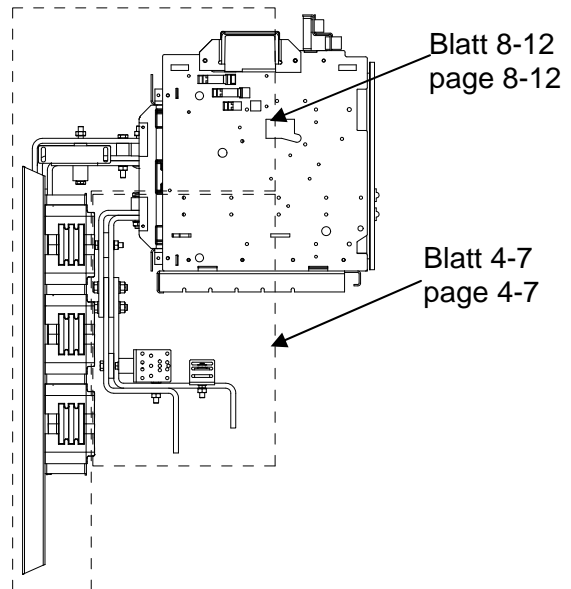
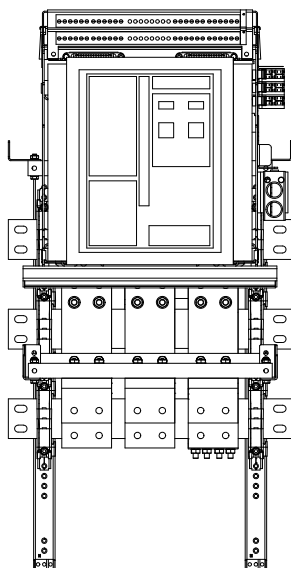
4-polig / 4-pole



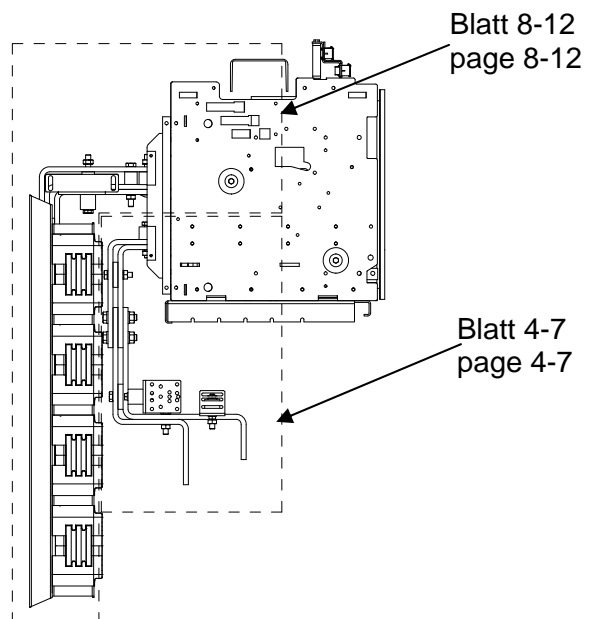
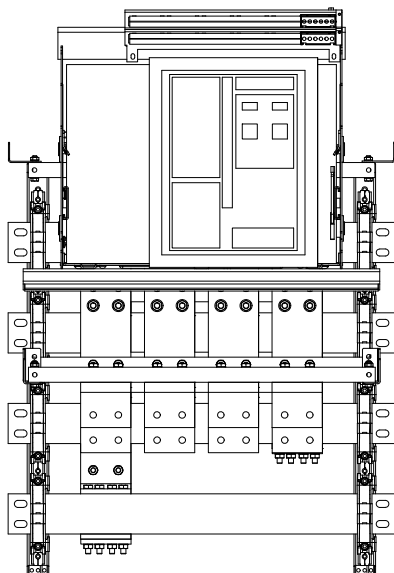
Einspeise-, Abgangsfeld IZM32 Ausfahreinheit 3200A Gl.S. Unten
incoming-, outgoing unit IZM32 withdrawable 3200A EVEN-Bottom
Anschluss Schalter - Gesamtansicht / switch connection - overview

Pos. no.	Benennung name	Beschreibung specification	Montagematerial/Zubehör Installation material/ comonents
1	Hauptsammelschiene main busbar		
2	Abgangssammelschiene outgoing busbar	3x100x10 mm	Blatt 8-12 Page 8-12
3	Eingangssammelschiene incoming busbar	2x100x10 mm	Blatt 4-7 Page 4-7
4	Sammelschienenverbindung busbar connection		Blatt 8-12 Page 8-12

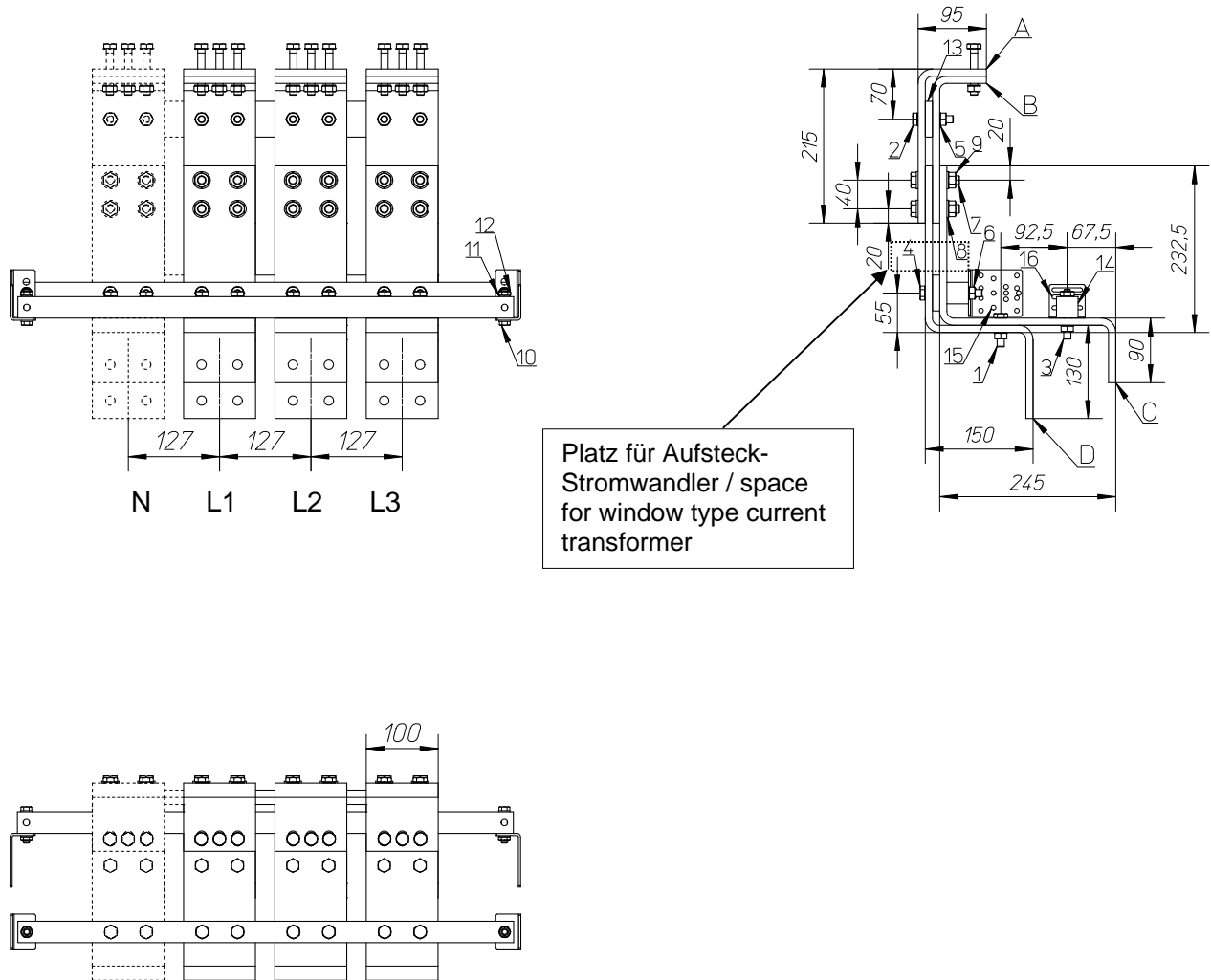
3-polig / 3-pole



4-polig / 4-pole



Einspeise-, Abgangsfeld IZM32 Ausfahreinheit 3200A Gl.S. Unten
incoming-, outgoing unit IZM32 withdrawable 3200A EVEN-Bottom
Eingangsschienenverbindung / incoming connection



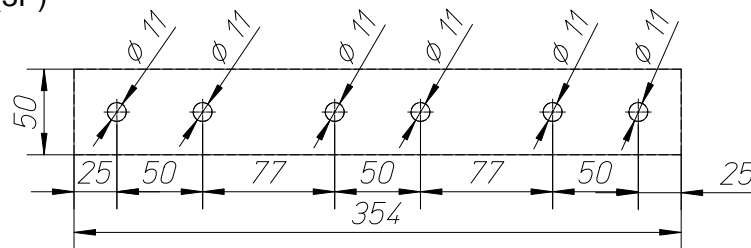
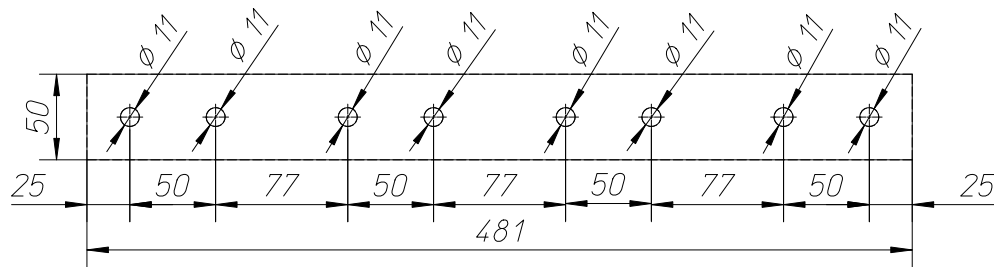
Kupfer / copper 100mm x 10mm
Gestreckte Längen* / flat length*

Schiene busbar	Gestreckte Länge N flat length N	Gestreckte Länge L1 flat length L1	Gestreckte Länge L2 flat length L2	Gestreckte Länge L3 flat length L3
A	293,4mm	293,4mm	293,4mm	293,4mm
B	263,4mm	263,4mm	263,4mm	263,4mm
C	524,3mm	524,3mm	524,3mm	524,3mm
D	479,3mm	479,3mm	479,3mm	479,3mm

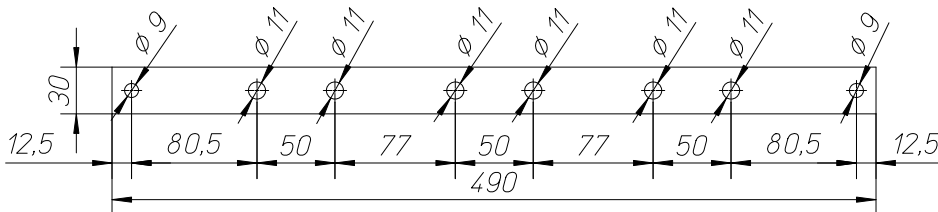
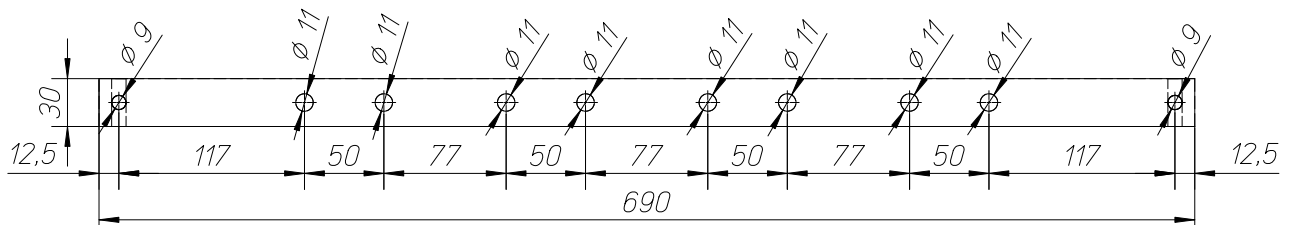
*Radius R10
Biegeverkürzung / correction factor: +3,4mm

Einspeise-, Abgangsfeld IZM32 Ausfahreinheit 3200A Gl.S. Unten
incoming-, outgoing unit IZM32 withdrawable 3200A EVEN-Bottom
Eingangsschienenverbindung / incoming connection

Pos. / No. 13
Stabilisator
stabilizer
50x10x481 / 354(3P)

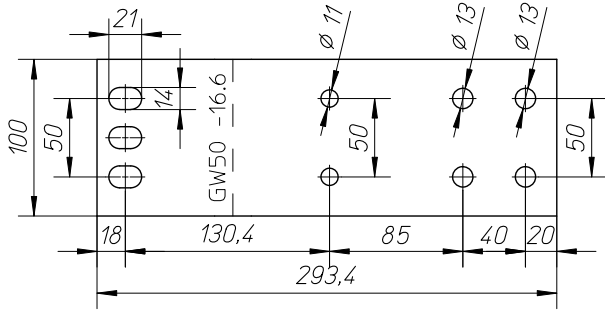


Pos. / No. 14
Stabilisator
stabilizer
30x30x690 / 490(3P)

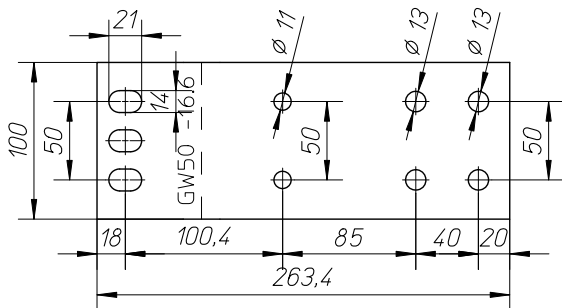


Einspeise-, Abgangsfeld IZM32 Ausfahreinheit 3200A Gl.S. Unten
incoming-, outgoing unit IZM32 withdrawable 3200A EVEN-Bottom
 Gestreckte Längen / flat length

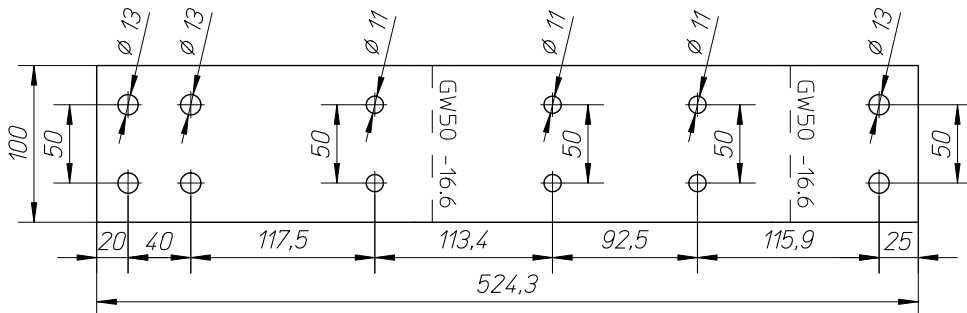
A



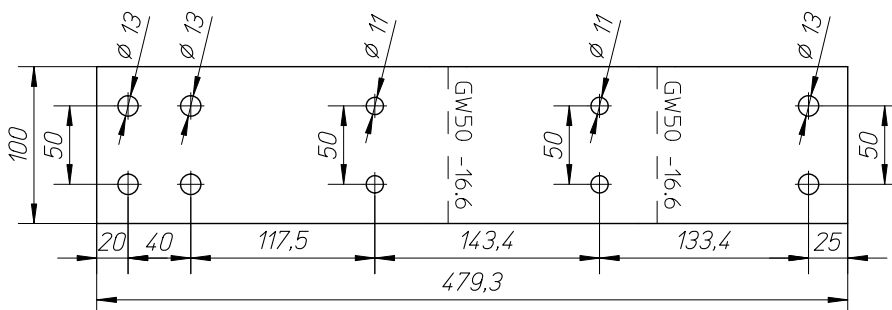
B



C



D



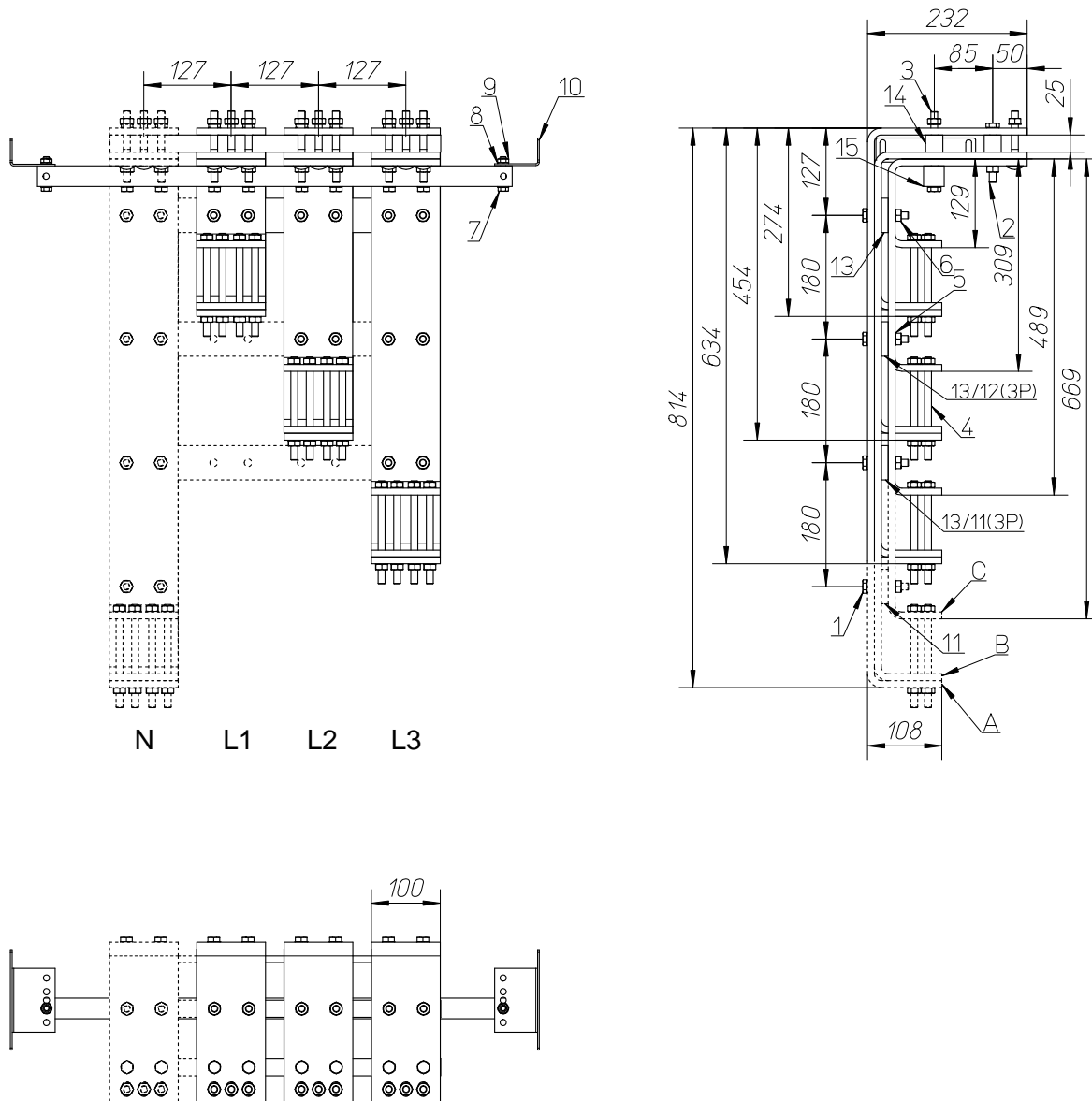
Einspeise-, Abgangsfeld IZM32 Ausfahreinheit 3200A Gl.S. Unten
incoming-, outgoing unit IZM32 withdrawable 3200A EVEN-Bottom
Stückliste Eingangsschienenverbindung / parts list incoming connection

Pos. no.	Menge quantity		Benennung name	Beschreibung specification	Bild picture
	3P	4P			
1	6 Stk/pcs	8 Stk/pcs	Sechskantschraube Hexagon head cap screw	DIN EN 24014 M10 x 40 – 8.8	
2	6 Stk/pcs	8 Stk/pcs	Sechskantschraube Hexagon head cap screw	DIN EN 24014 M10 x 50 – 8.8	
3	6 Stk/pcs	8 Stk/pcs	Sechskantschraube Hexagon head cap screw	DIN EN 24014 M10 x 60 – 8.8	
4	6 Stk/pcs	8 Stk/pcs	Sechskantschraube Hexagon head cap screw	DIN EN 24014 M10 x 80 – 8.8	
5	48 Stk/pcs	64 Stk/pcs	Spannscheibe Conical spring washer for bolted connections	DIN 6796-10-FST	
6	24 Stk/pcs	32 Stk/pcs	Sechskantmutter Hexagon nut	DIN EN 24032 M10 – 8.8	
7	12 Stk/pcs	16 Stk/pcs	Sechskantschraube Hexagon head cap screw	DIN EN 24014 M12 x 60 – 8.8	
8	24 Stk/pcs	32 Stk/pcs	Spannscheibe Conical spring washer for bolted connections	DIN 6796-12-FST	
9	12 Stk/pcs	16 Stk/pcs	Sechskantmutter Hexagon nut	DIN EN 24032 M12 – 8.8	
10	4 Stk/pcs	4 Stk/pcs	Sechskantschraube Hexagon head cap screw	DIN EN 24014 M8 x 45 – 8.8	
11	8 Stk/pcs	8 Stk/pcs	Spannscheibe Conical spring washer for bolted connections	DIN 6796-8-FST	
12	4 Stk/pcs	4 Stk/pcs	Sechskantmutter Hexagon nut	DIN EN 24032 M8 – 8.8	
13	2 Stk/pcs	2 Stk/pcs	Stabilisator 50x10x481 / 354(3P) stabilizer 50x10x481 / 354(3P)	HM2471 DIN7735	
14	2 Stk/pcs	2 Stk/pcs	Stabilisator 30x30x690 /490(3P) Stabilizer 30x30x690 /490(3P)	HM2471 DIN7735	
15	2 Stk/pcs	2 Stk/pcs	Befestigungswinkel Fixing Bracket	XNBW-G06 BI 3,0 DIN59232 ST 02 Z275	
16	2 Stk/pcs	2 Stk/pcs	Befestigungswinkel Fixing Bracket	XNBW-G BI 3,0 DIN59232 ST 02 Z275	

Anzugsdrehmomente / stud torque

Gewindegröße Screw Size	Fertigung Mounting	Prüfung Test
M8	20 Nm	17 Nm
M10	40 Nm	37 Nm
M12	70 Nm	67 Nm

Einspeise-, Abgangsfeld IZM32 Ausfahreinheit 3200A Gl.S. Unten
incoming-, outgoing unit IZM32 withdrawable 3200A EVEN-Bottom
 Abgangsschienenverbindung / outgoing connection

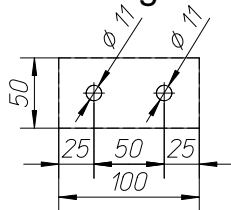


Kupfer / copper 100mm x 10mm Gestreckte Längen* / flat length*				
Schiene busbar	Gestreckte Länge N flat length N Tiefe / depth	Gestreckte Länge L1 flat length L1 Tiefe / depth	Gestreckte Länge L2 flat length L2 Tiefe / depth	Gestreckte Länge L3 flat length L3 Tiefe / depth
	600	600	600	600
A	1120,8mm	580,8mm	760,8mm	940,8mm
B	1055,8mm	515,8mm	695,8mm	875,8mm
C	915,8mm	375,8mm	555,8mm	735,8mm

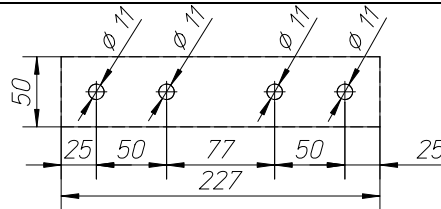
*Radius R10
 Biegeverkürzung / correction factor: +3,4mm

Einspeise-, Abgangsfeld IZM32 Ausfahreinheit 3200A Gl.S. Unten
incoming-, outgoing unit IZM32 withdrawable 3200A EVEN-Bottom
Abgangsschienenverbindung / outgoing connection

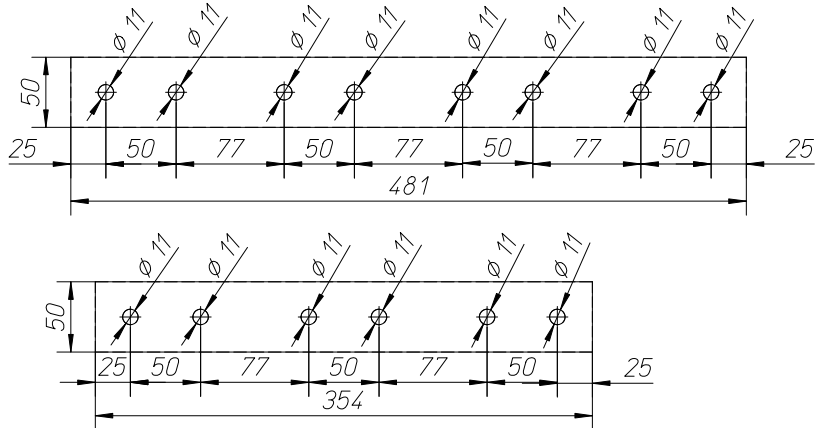
Pos. / No. 11
Stabilisator
stabilizer
50x10x100



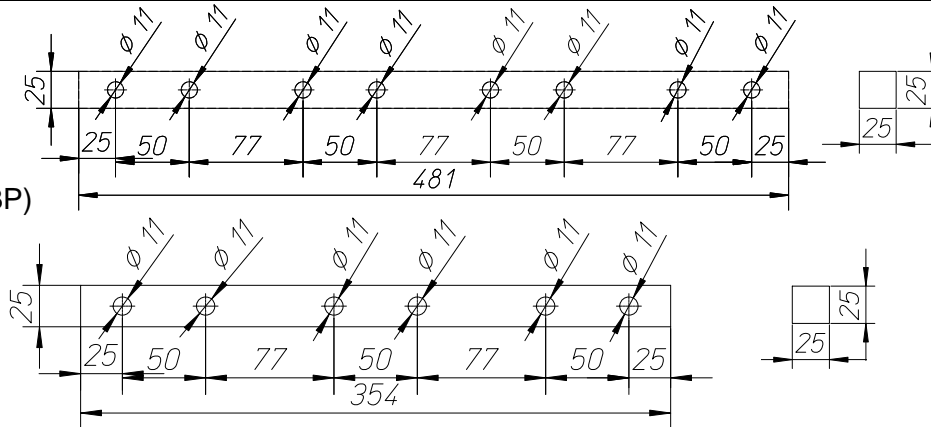
Pos. / No. 12
Stabilisator
stabilizer
50x10x227



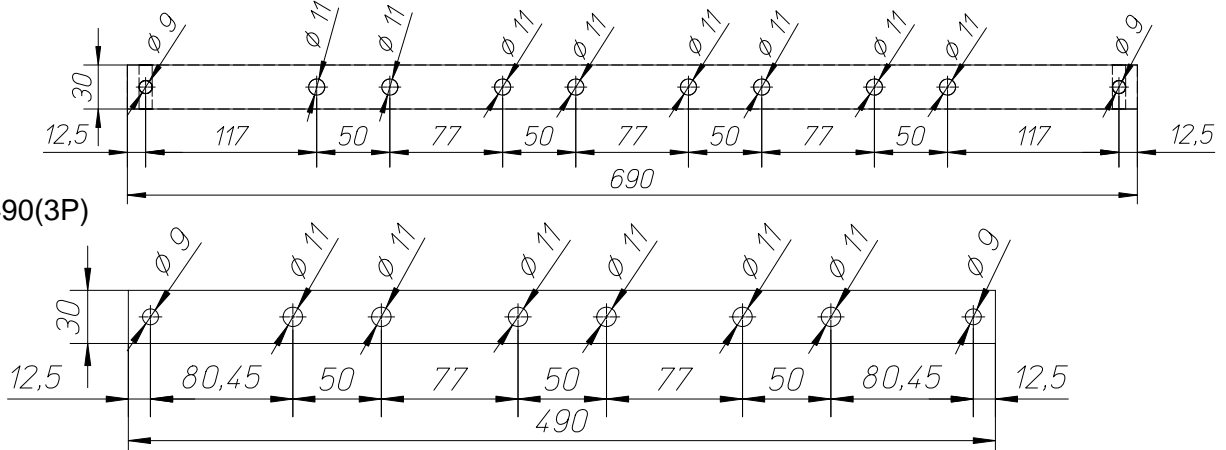
Pos. / No. 13
Stabilisator
stabilizer
50x10x481 / 354(3P)



Pos. / No. 14
Stabilisator
stabilizer
25x25x481 / 354(3P)



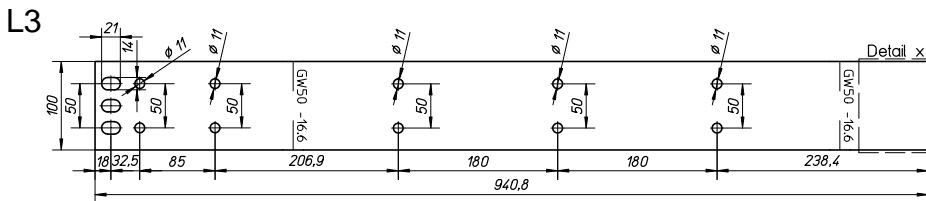
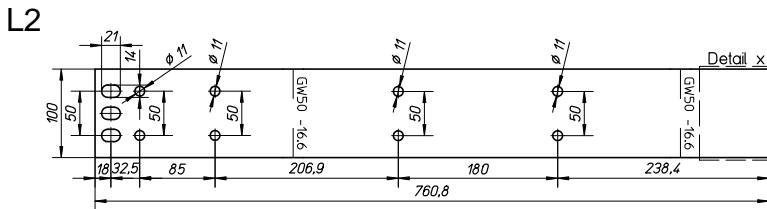
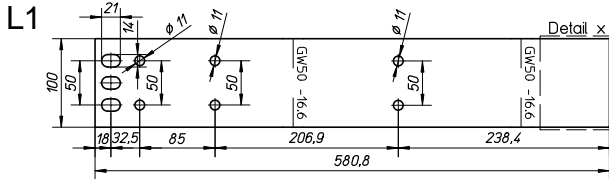
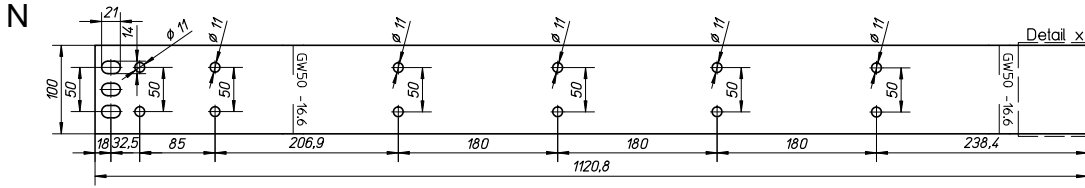
Pos. / No. 15
Stabilisator
stabilizer
30x30x690 / 490(3P)



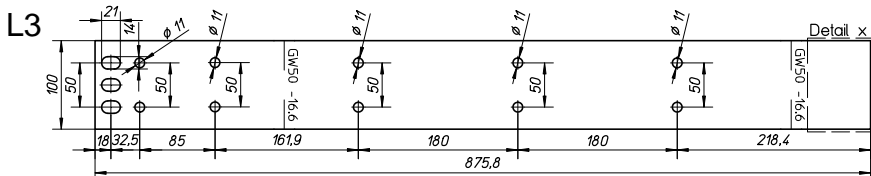
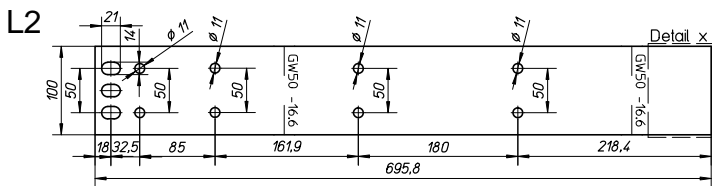
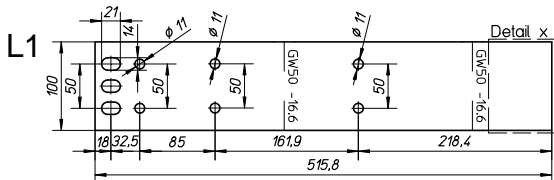
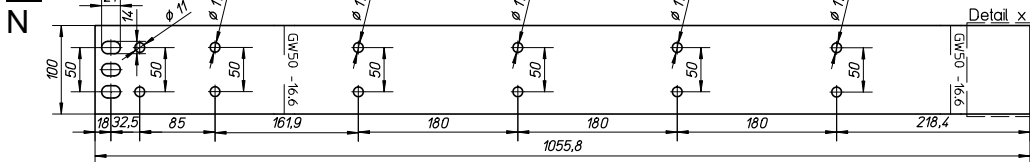
Einspeise-, Abgangsfeld IZM32 Ausfahreinheit 3200A Gl.S. Unten incoming-, outgoing unit IZM32 withdrawable 3200A EVEN-Bottom

Gestreckte Längen Tiefe / flat length depth

A:



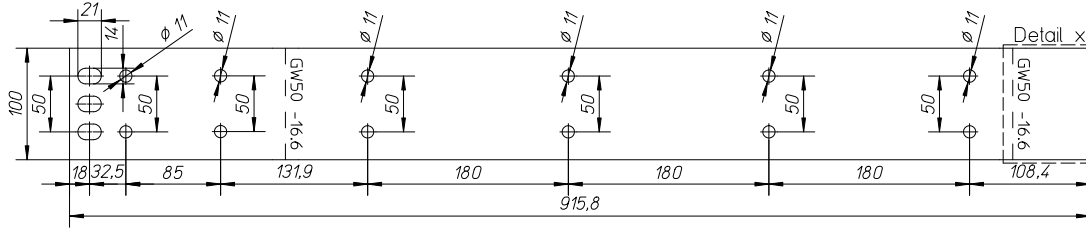
B:



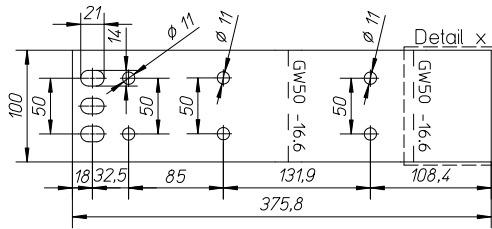
Einspeise-, Abgangsfeld IZM32 Ausfahreinheit 3200A Gl.S. Unten incoming-, outgoing unit IZM32 withdrawable 3200A EVEN-Bottom

Gestreckte Längen Tiefe / flat length depth

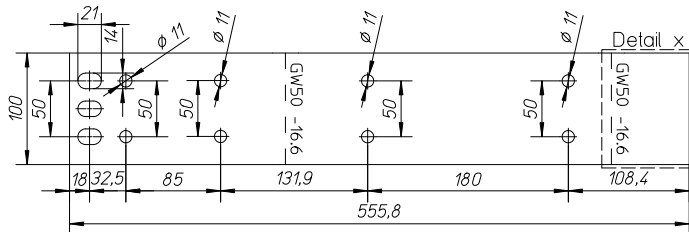
C:
N:



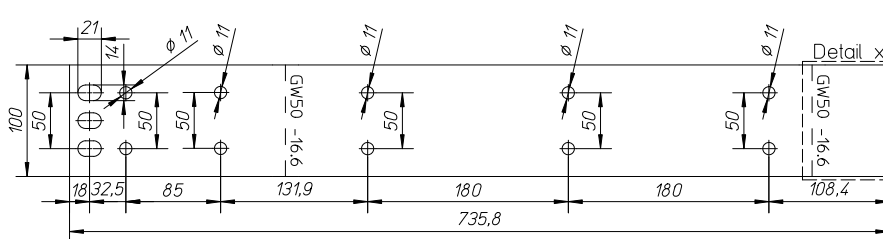
L1



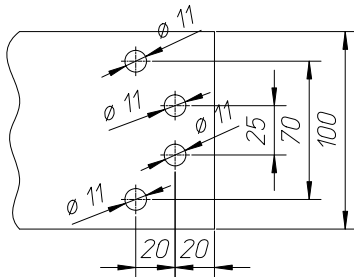
L2



L3



Detail
HSS mit 3 Cu-Schienen
Main busbar with 3 Cu-bars



Einspeise-, Abgangsfeld IZM32 Ausfahreinheit 3200A Gl.S. Unten
incoming-, outgoing unit IZM32 withdrawable 3200A EVEN-Bottom
Stückliste Abgangsschienenverbindung / parts list outgoing connection

Pos. no.	Menge quantity Tiefe / depth 600		Benennung name	Beschreibung specification	Bild picture
	3P	4P			
1	12 Stk/pcs	20 Stk/pcs	Sechskantschraube Hexagon head cap screw	DIN EN 24014 M10 x 60 – 8.8	
2	6 Stk/pcs	8 Stk/pcs	Sechskantschraube Hexagon head cap screw	DIN EN 24014 M10 x 80 – 8.8	
3	6 Stk/pcs	8 Stk/pcs	Sechskantschraube Hexagon head cap screw	DIN EN 24014 M10 x 110 – 8.8	
4	12 Stk/pcs	16 Stk/pcs	Stiftschraube Stud screw	DIN 939 M10x140 – 8.8	
5	96 Stk/pcs	136 Stk/pcs	Spannscheibe Conical spring washer for bolted connections	DIN 6796-10-FST	
6	48 Stk/pcs	68 Stk/pcs	Sechskantmutter Hexagon nut	DIN EN 24032 M10 – 8.8	
7	2 Stk/pcs	2 Stk/pcs	Sechskantschraube Hexagon head cap screw	DIN EN 24014 M8 x 45 – 8.8	
8	4 Stk/pcs	4 Stk/pcs	Spannscheibe Conical spring washer for bolted connections	DIN 6796-8-FST	
9	2 Stk/pcs	2 Stk/pcs	Sechskantmutter Hexagon nut	DIN EN 24032 M8 – 8.8	
10	2 Stk/pcs	2 Stk/pcs	Befestigungswinkel Fixing Bracket	XNBW-E06 BI 3,0 DIN59232 ST 02 Z275	
11	1 Stk/pcs	1 Stk/pcs	Stabilisator 50x10x100 stabilizer 50x10x100	HM2471 DIN7735	
12	1 Stk/pcs	-	Stabilisator 50x10x227 stabilizer 50x10x227	HM2471 DIN7735	
13	1 Stk/pcs	3 Stk/pcs	Stabilisator 50x10x481 / 354(3P) stabilizer 50x10x481 / 354(3P)	HM2471 DIN7735	
14	2 Stk/pcs	2 Stk/pcs	Stabilisator 25x25x481 / 354 (3P) Stabilizer 25x25x481 / 354 (3P)	HM2471 DIN7735	
15	1 Stk/pcs	1 Stk/pcs	Stabilisator 30x30x690 / 490(3P) Stabilizer 30x30x690 / 490(3P)	HM2471 DIN7735	

Anzugsdrehmomente / stud torque

Gewindegröße Screw Size	Fertigung Mounting	Prüfung Test
M8	20 Nm	17 Nm
M10	40 Nm	37 Nm