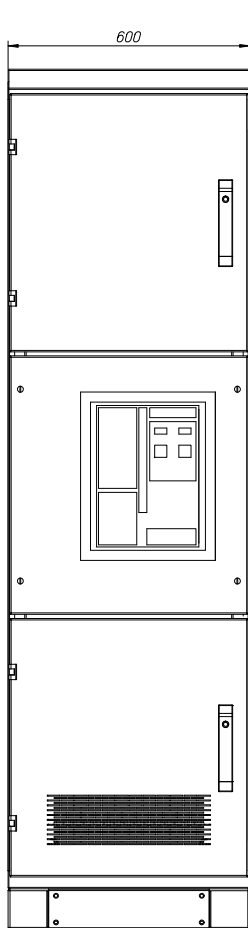
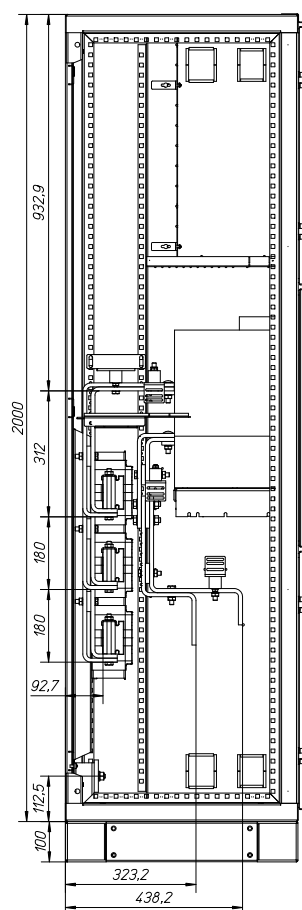


# Einspeise-, Abgangsfeld IZM20 Festeinbau 2000A Gl. S. incoming-, outgoing unit IZM20 fix 2000A EVEN

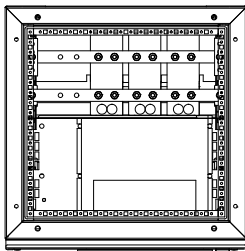
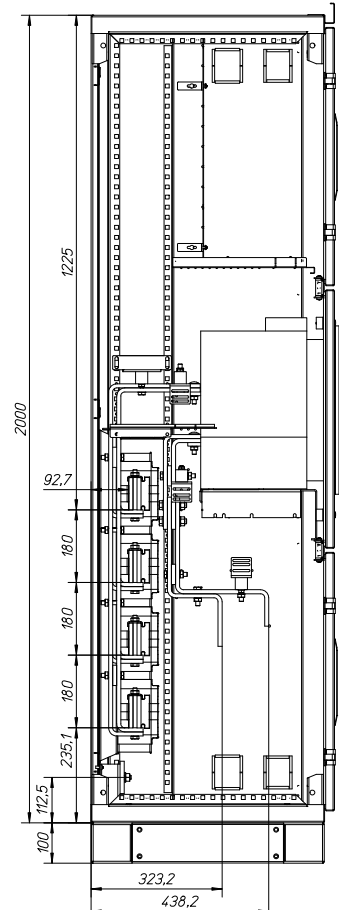
Aufbau Feld / installation field



3-polig/ 3-pole



4-polig/ 4-pole



## xEnergy Feld / field 2000x600x600/800

Einbausatz / mounting kit: IZM20

IZM20

Bemessungsstrom / Current Rating (I): 2000A

Material der Cu-Schienen / busbar material: EN 13601-Cu-ETP-R250  
(ersetzt / replaced: DIN 40500 / 46433 E-Cu 57, F25)

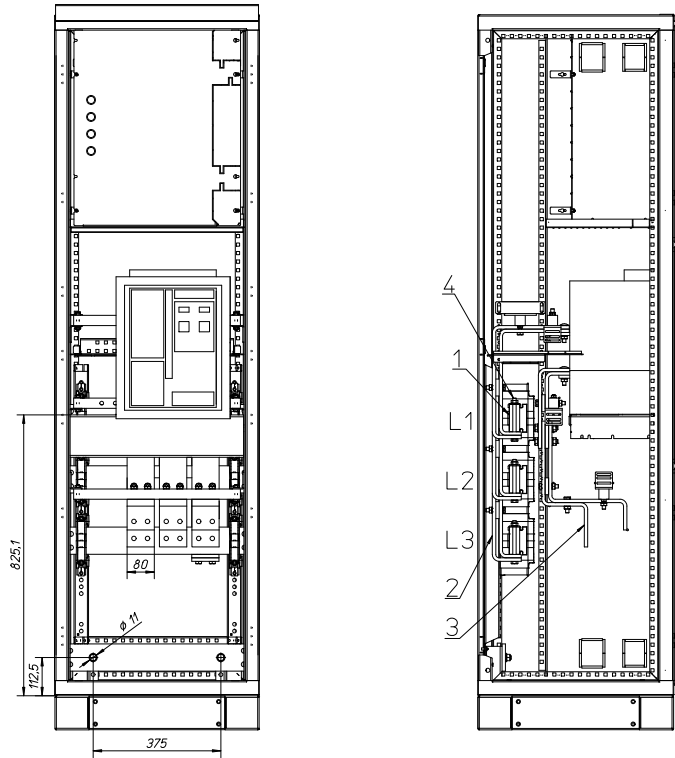
Hinweis / note:

Kupferaufbau kann horizontal gespiegelt werden!  
Copper construction can be mounted upside down!

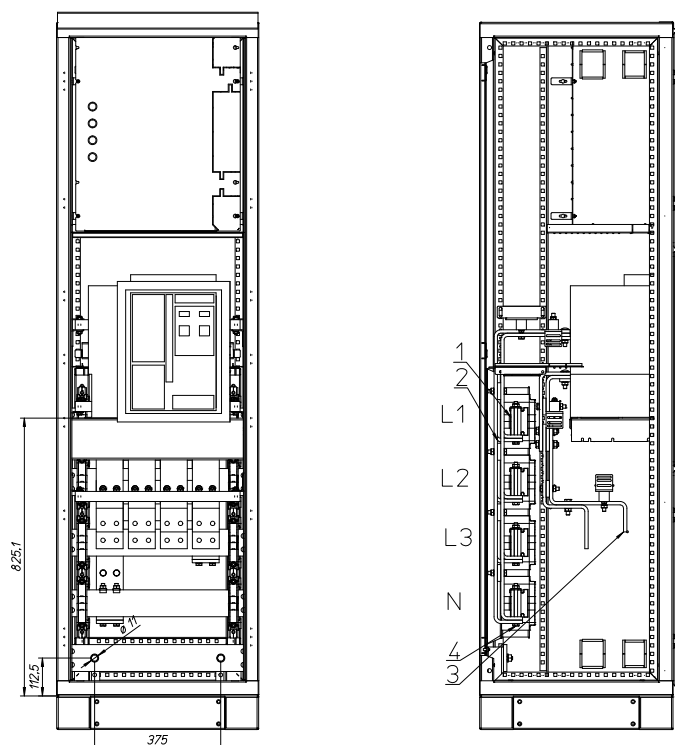
# Einspeise-, Abgangsfeld IZM20 Festeinbau 2000A Gl. S. incoming-, outgoing unit IZM20 fix 2000A EVEN

Eingangsschienenverbindung / incoming connection

## 3-polig / 3-pole



## 4-polig / 4-pole

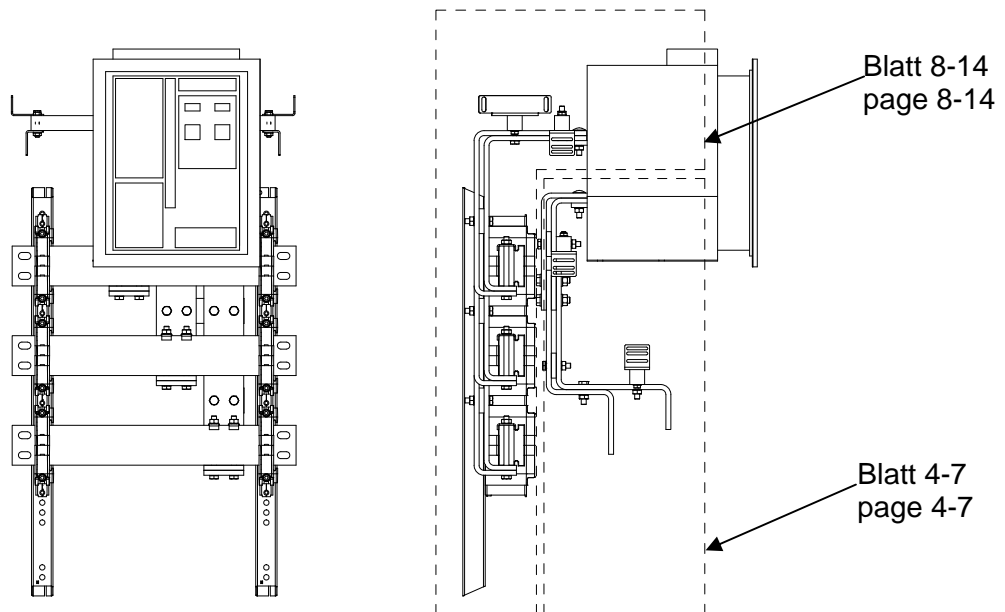


# Einspeise-, Abgangsfeld IZM20 Festeinbau 2000A Gl. S. incoming-, outgoing unit IZM20 fix 2000A EVEN

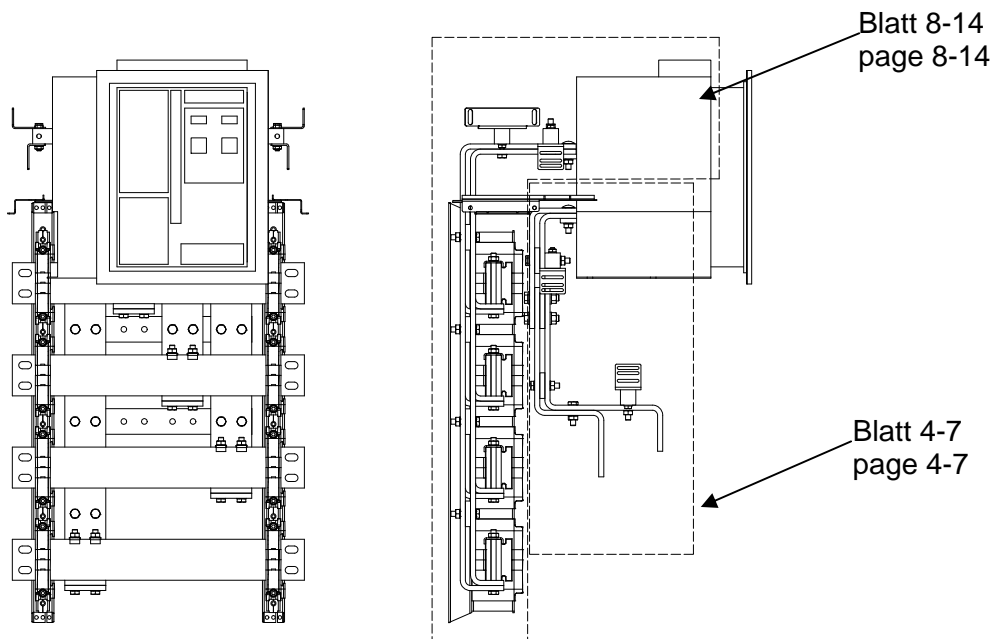
Anschluss Schalter - Gesamtansicht / switch connection - overview

Pos. no.	Benennung name	Beschreibung specification	Montagematerial/Zubehör Installation material/ comonents
1	Hauptsammelschiene main busbar		
2	Abgangssammelschiene outgoing busbar	2x80x10 mm	Blatt 8-14 Page 8-14
3	Eingangssammelschiene incoming busbar	2x80x10 mm	Blatt 4-7 Page 4-7
4	Sammelschienenverbindung busbar connection		Blatt 8-14 Page 8-14

3-polig / 3-pole

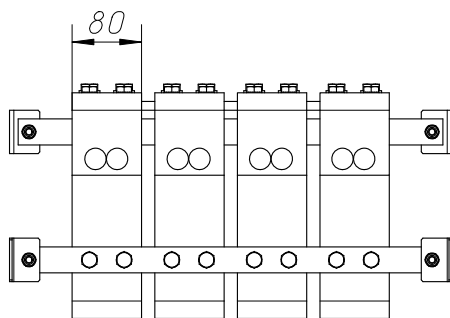
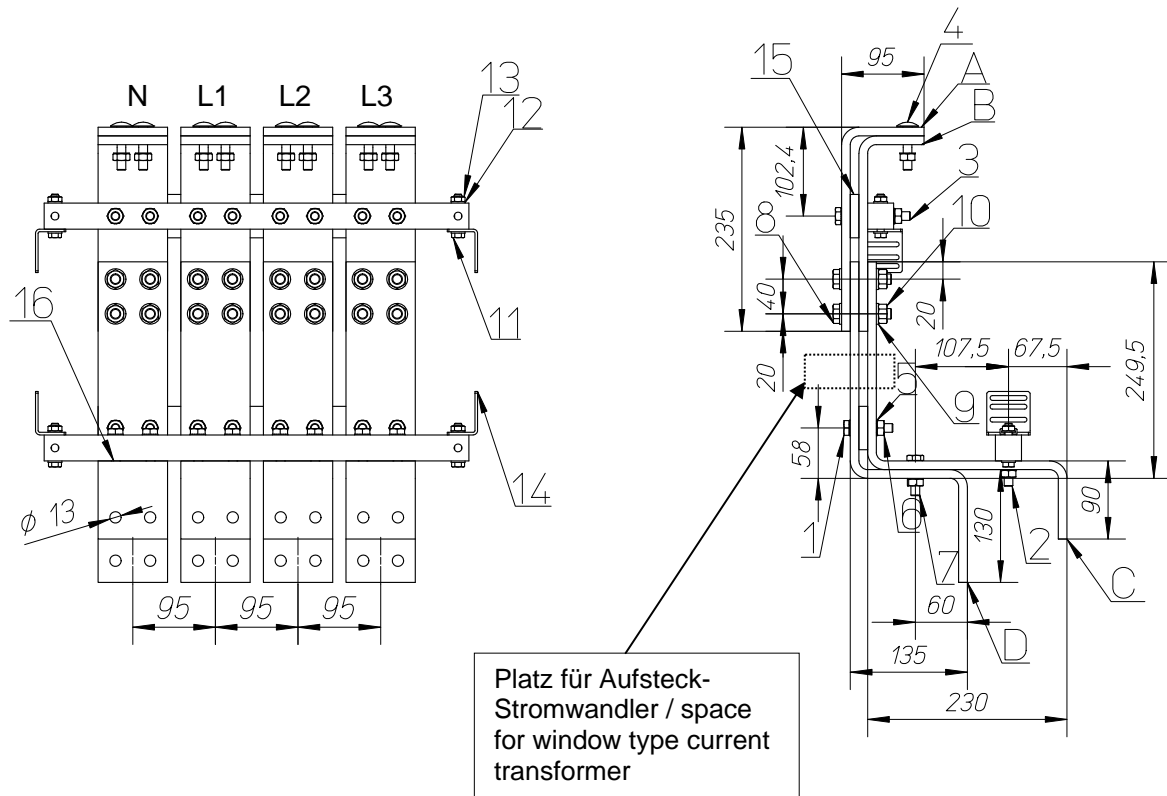


4-polig / 4-pole



# Einspeise-, Abgangsfeld IZM20 Festeinbau 2000A Gl. S. incoming-, outgoing unit IZM20 fix 2000A EVEN

Eingangsschienenverbindung / incoming connection



**Kupfer / copper 80mm x 10mm**  
**Gestreckte Längen\* / flat length\***

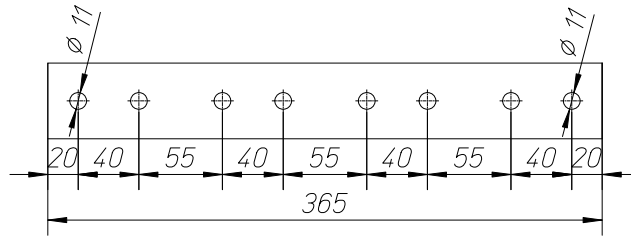
Schiene busbar	Gestreckte Länge N flat length N	Gestreckte Länge L1 flat length L1	Gestreckte Länge L2 flat length L2	Gestreckte Länge L3 flat length L3
A	313,4mm	313,4mm	313,4mm	313,4mm
B	283,4mm	283,4mm	283,4mm	283,4mm
C	526,3mm	526,3mm	526,3mm	526,3mm
D	481,3mm	481,3mm	481,3mm	481,3mm

\*Radius R10

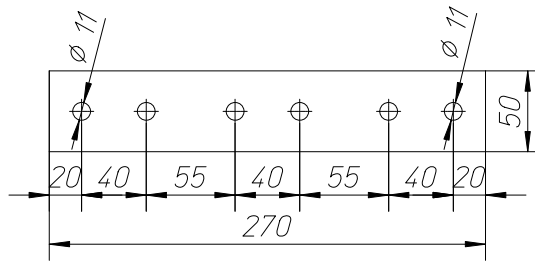
Biegeverkungung / correction factor: +3,4mm

# Einspeise-, Abgangsfeld IZM20 Festeinbau 2000A Gl. S. incoming-, outgoing unit IZM20 fix 2000A EVEN

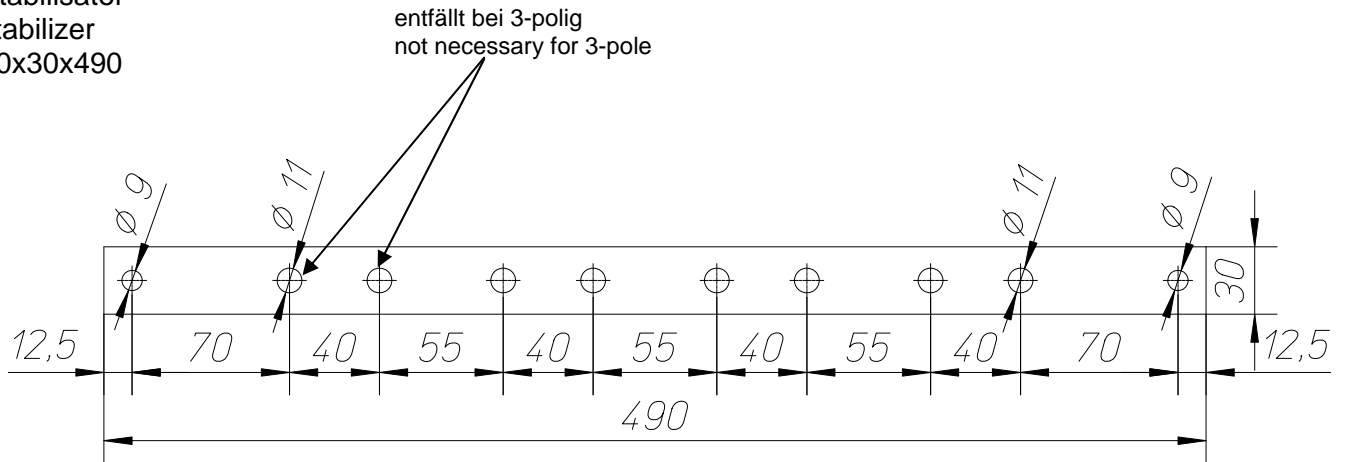
Eingangsschienenverbindung / incoming connection



**Pos. / No. 15**  
Stabilisator  
stabilizer  
50x10x365 / 270(3P)



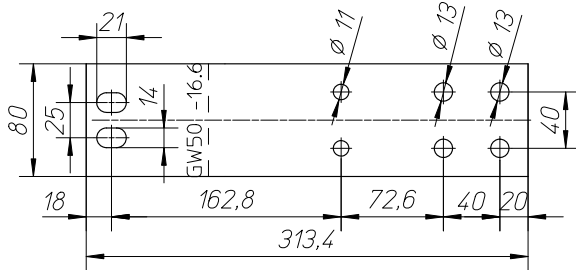
**Pos. / No. 16**  
Stabilisator  
stabilizer  
30x30x490



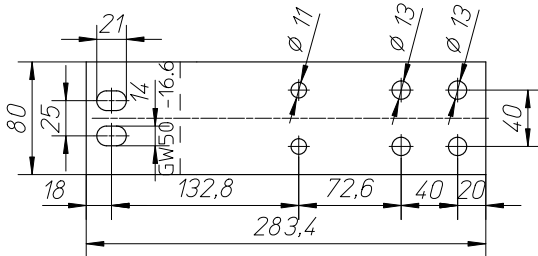
# Einspeise-, Abgangsfeld IZM20 Festeinbau 2000A Gl. S. incoming-, outgoing unit IZM20 fix 2000A EVEN

Gestreckte Längen / flat length

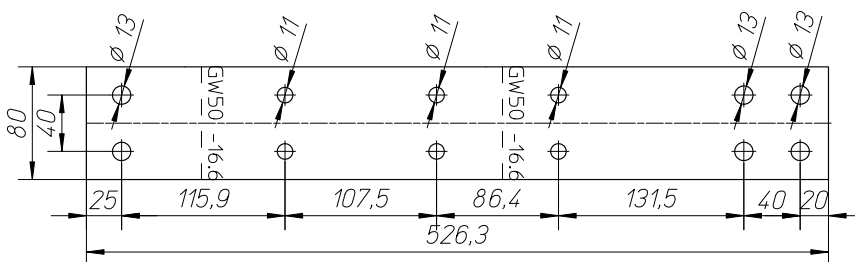
A



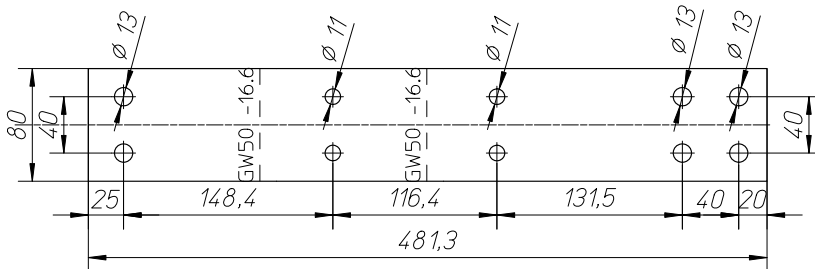
B



C



D



# Einspeise-, Abgangsfeld IZM20 Festeinbau 2000A Gl. S. incoming-, outgoing unit IZM20 fix 2000A EVEN

## Stückliste Eingangsschienenverbindung / parts list incoming connection

Pos. no.	Menge quantity		Benennung name	Beschreibung specification	Bild picture
	3P	4P			
1	6 Stk/pcs	8 Stk/pcs	Sechskantschraube Hexagon head cap screw	DIN EN 24014 M10 x 50 – 8.8	
2	6 Stk/pcs	8 Stk/pcs	Sechskantschraube Hexagon head cap screw	DIN EN 24014 M10 x 60 – 8.8	
3	6 Stk/pcs	8 Stk/pcs	Sechskantschraube Hexagon head cap screw	DIN EN 24014 M10 x 80 – 8.8	
4	6 Stk/pcs	8 Stk/pcs	Flachrundschrube mit Vierkantansatz Saucer-head screw with square neck	DIN 603 M10 x 50 – 8.8	
5	54 Stk/pcs	70 Stk/pcs	Spannscheibe Conical spring washer for bolted connections	DIN 6796-10-FST	
6	30 Stk/pcs	40 Stk/pcs	Sechskantmutter Hexagon nut	DIN EN 24032 M10 – 8.8	
7	6 Stk/pcs	8 Stk/pcs	Sechskantschraube Hexagon head cap screw	DIN EN 24014 M10 x 40 – 8.8	
8	12 Stk/pcs	16 Stk/pcs	Sechskantschraube Hexagon head cap screw	DIN EN 24014 M12 x 60 – 8.8	
9	24 Stk/pcs	32 Stk/pcs	Spannscheibe Conical spring washer for bolted connections	DIN 6796-12-FST	
10	12 Stk/pcs	16 Stk/pcs	Sechskantmutter Hexagon nut	DIN EN 24032 M12 – 8.8	
11	4 Stk/pcs	4 Stk/pcs	Sechskantschraube Hexagon head cap screw	DIN EN 24014 M8 x 45 – 8.8	
12	8 Stk/pcs	8 Stk/pcs	Spannscheibe Conical spring washer for bolted connections	DIN 6796-8-FST	
13	4 Stk/pcs	4 Stk/pcs	Sechskantmutter Hexagon nut	DIN EN 24032 M8 – 8.8	
14	4 Stk/pcs	4 Stk/pcs	Befestigungswinkel Fixing Bracket	XNBW-G BI 3,0 DIN59232 ST 02 Z275	
15	2 Stk/pcs	2 Stk/pcs	Stabilisator 50x10x365 / 270(3P) stabilizer 50x10x365 / 270(3P)	HM2471 DIN7735	
16	2 Stk/pcs	2 Stk/pcs	Stabilisator 30x30x490 Stabilizer 30x30x490	HM2471 DIN7735	

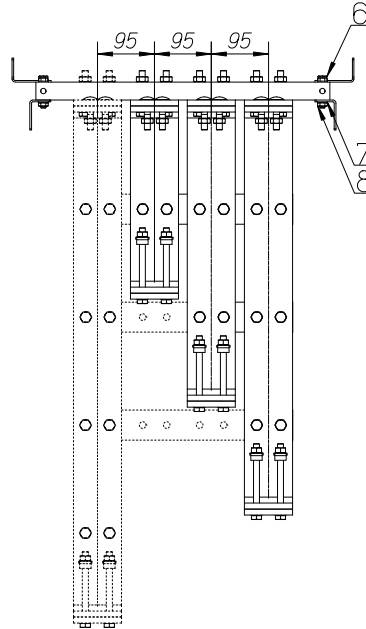
### Anzugsdrehmomente / stud torque

Gewindegröße Screw Size	Fertigung Mounting	Prüfung Test
M8	20 Nm	17 Nm
M10	40 Nm	37 Nm
M12	70 Nm	67 Nm

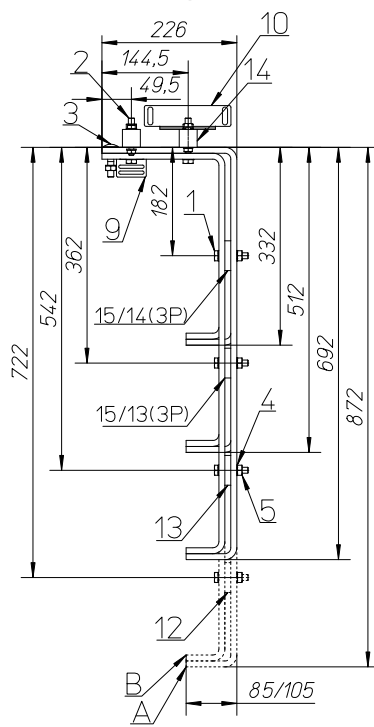
# Einspeise-, Abgangsfeld IZM20 Festeinbau 2000A Gl. S. incoming-, outgoing unit IZM20 fix 2000A EVEN

## Abgangsschienenverbindung / outgoing connection

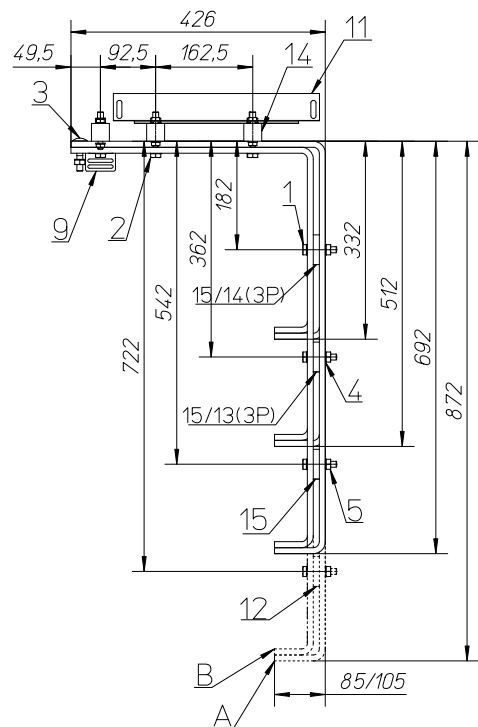
N L1 L2 L3



**Tiefe 600 / depth 600:**



**Tiefe 800 / depth 800:**



Kupfer / copper 80mm x 10mm Gestreckte Längen* / flat length*								
Schiene busbar	Gestreckte Länge N flat length N Tiefe / depth		Gestreckte Länge L1 flat length L1 Tiefe / depth		Gestreckte Länge L2 flat length L2 Tiefe / depth		Gestreckte Länge L3 flat length L3 Tiefe / depth	
	600	800	600	800	600	800	600	800
A	1149,8/ 1169,8mm	1349,8/ 1369,8mm	609,8/ 629,8mm	809,8/ 829,8mm	789,8/ 809,8mm	989,8/ 1009,8mm	969,8/ 989,8mm	1169,8/ 1189,8mm
B	1089,8/ 1109,8mm	1289,8/ 1309,8mm	549,8/ 569,8mm	749,8/ 769,8mm	729,8/ 749,8mm	929,8/ 949,8mm	909,8/ 929,8mm	1109,8/ 1129,8mm

\*Radius R10

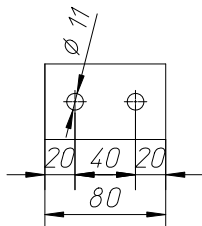
Biegeverkürzung / correction factor: +3,4mm



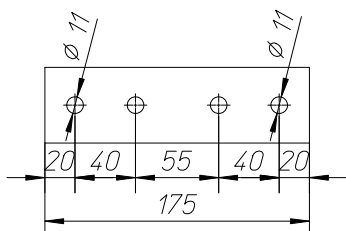
# Einspeise-, Abgangsfeld IZM20 Festeinbau 2000A Gl. S. incoming-, outgoing unit IZM20 fix 2000A EVEN

## Abgangsschienenverbindung / outgoing connection

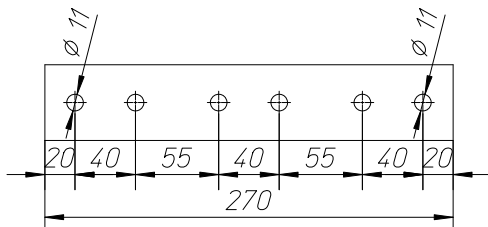
**Pos. / No. 12**  
Stabilisator  
stabilizer  
50x10x80



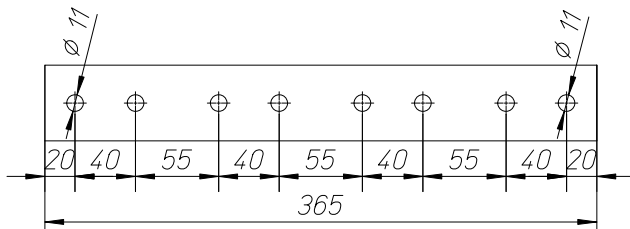
**Pos. / No. 13**  
Stabilisator  
stabilizer  
50x10x175



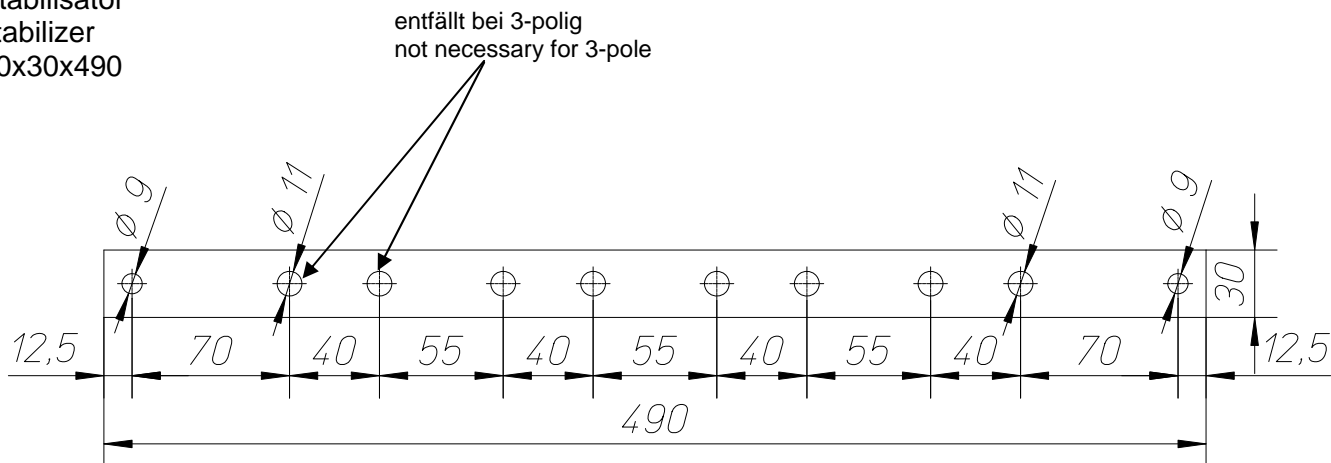
**Pos. / No. 14**  
Stabilisator  
stabilizer  
50x10x270



**Pos. / No. 15**  
Stabilisator  
stabilizer  
50x10x365



**Pos. / No. 16**  
Stabilisator  
stabilizer  
30x30x490

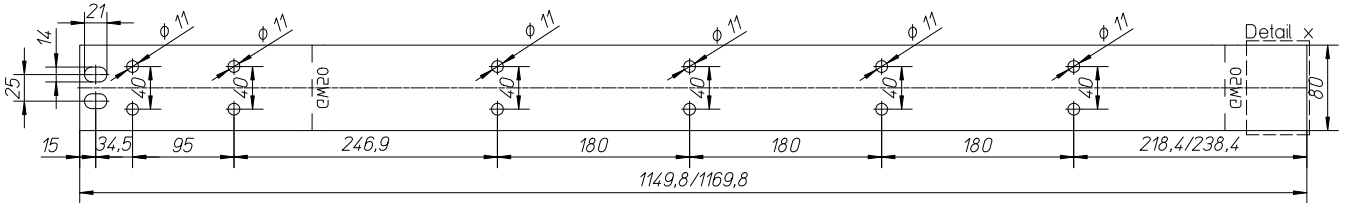


# Einspeise-, Abgangsfeld IZM20 Festeinbau 2000A Gl. S. incoming-, outgoing unit IZM20 fix 2000A EVEN

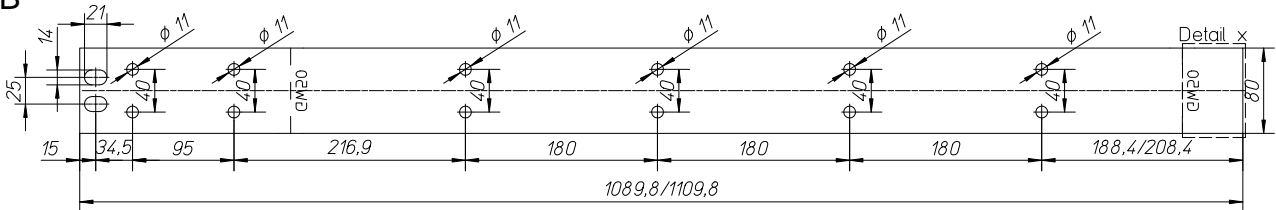
Gestreckte Längen Tiefe 600 / flat length depth 600

N:

A

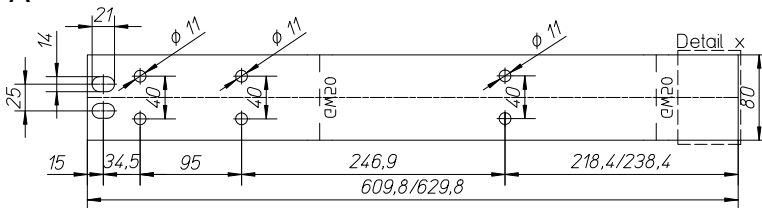


B

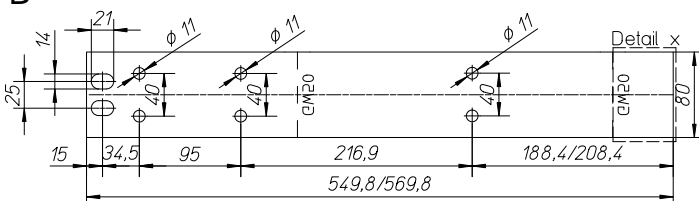


L1:

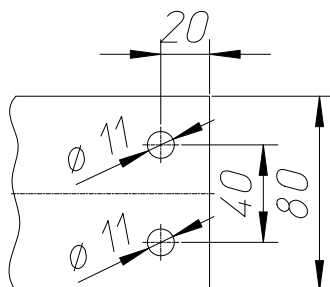
A



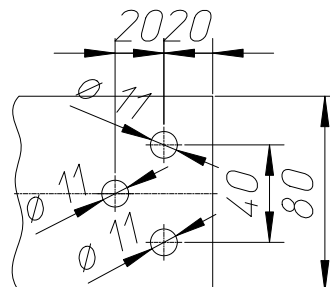
B



Detail x  
HSS mit 2 Cu-Schienen  
Main busbar with 2 Cu-bars

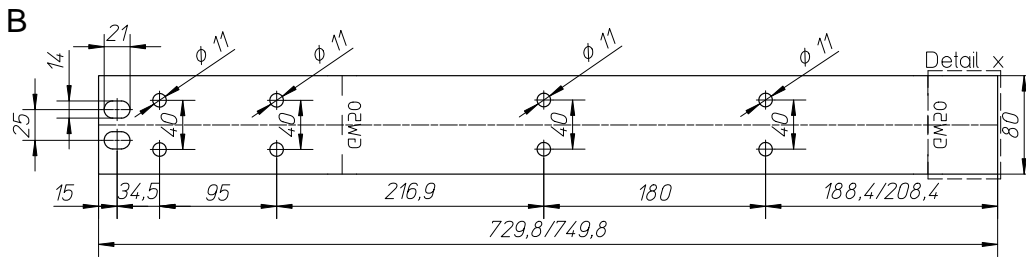
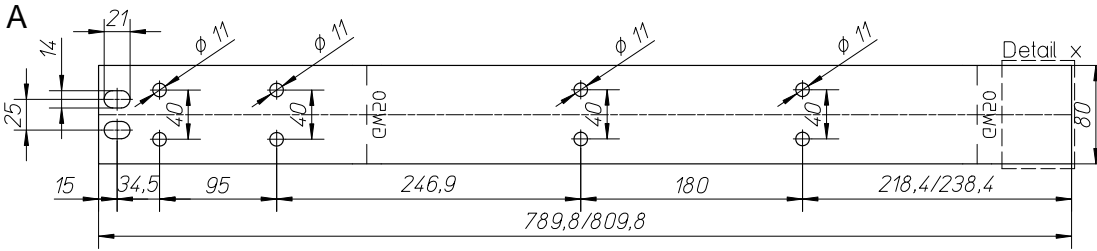


Detail x  
HSS mit 3 Cu-Schienen  
Main busbar with 3 Cu-bars

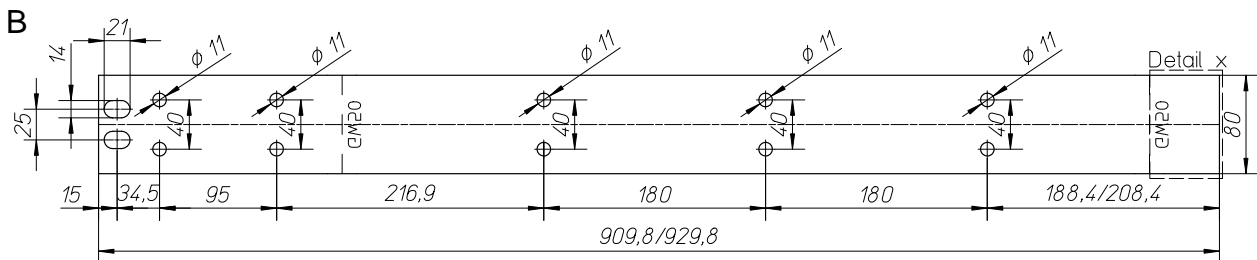
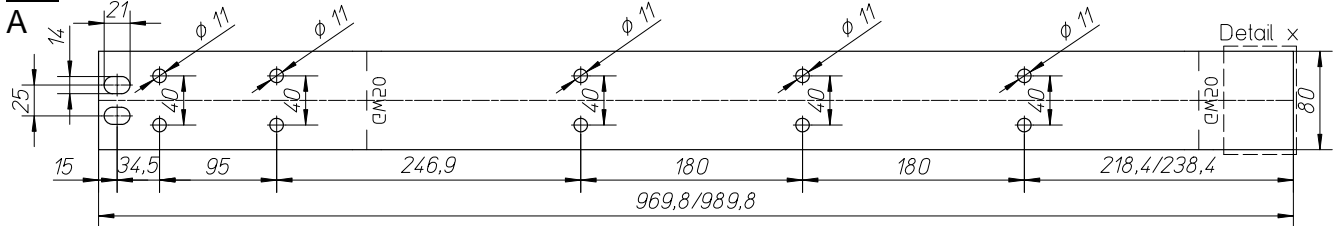


# Einspeise-, Abgangsfeld IZM20 Festeinbau 2000A Gl. S. incoming-, outgoing unit IZM20 fix 2000A EVEN

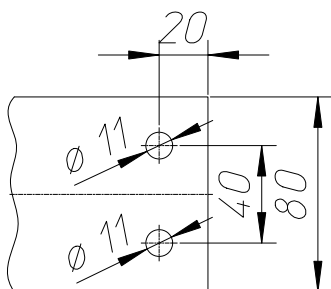
## L2:



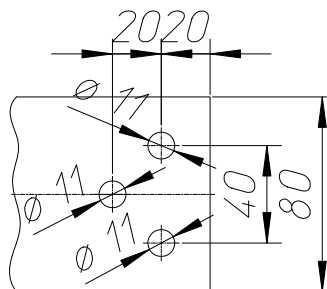
## L3:



Detail x  
HSS mit 2 Cu-Schienen  
Main busbar with 2 Cu-bars



Detail x  
HSS mit 3 Cu-Schienen  
Main busbar with 3 Cu-bars

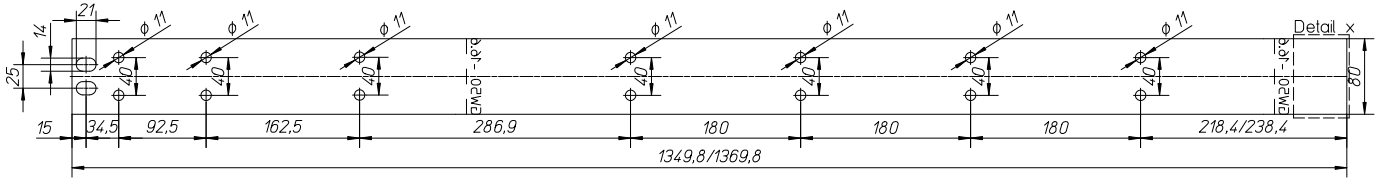


# Einspeise-, Abgangsfeld IZM20 Festeinbau 2000A Gl. S. incoming-, outgoing unit IZM20 fix 2000A EVEN

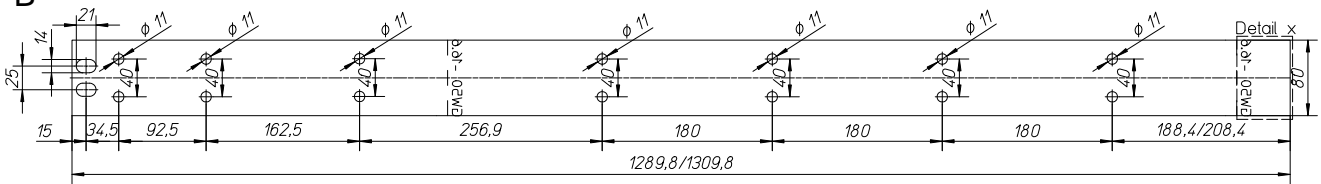
Gestreckte Längen Tiefe 800 / flat length depth 800

N:

A

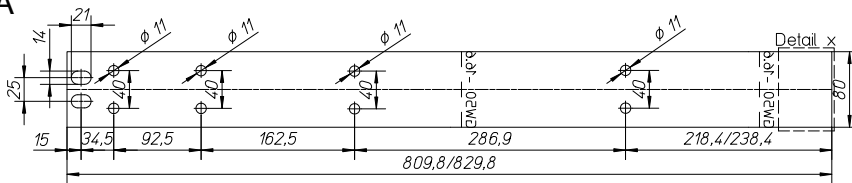


B

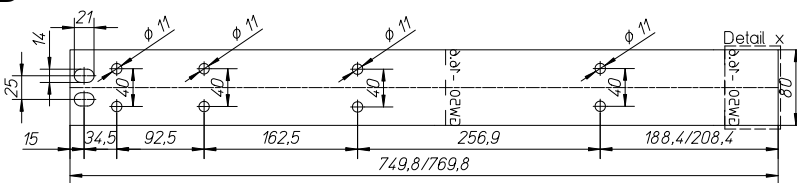


L1:

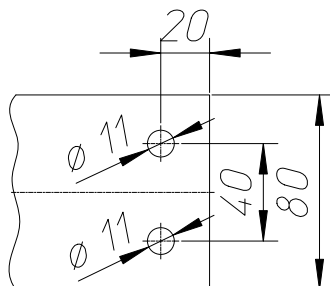
A



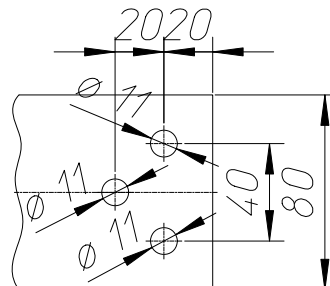
B



Detail x  
HSS mit 2 Cu-Schienen  
Main busbar with 2 Cu-bars



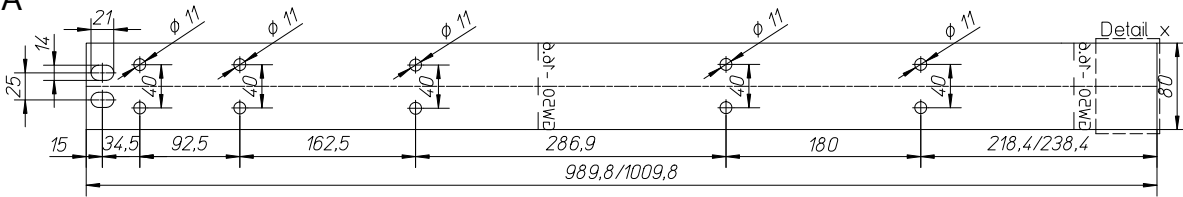
Detail x  
HSS mit 3 Cu-Schienen  
Main busbar with 3 Cu-bars



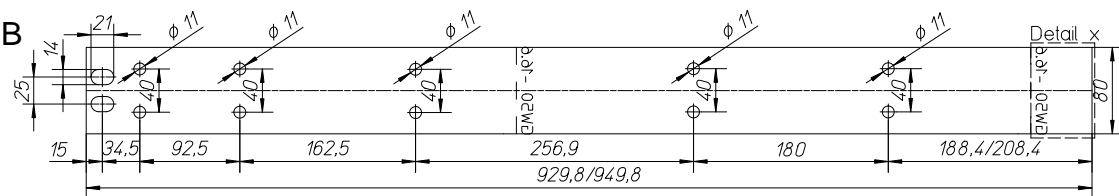
# Einspeise-, Abgangsfeld IZM20 Festeinbau 2000A Gl. S. incoming-, outgoing unit IZM20 fix 2000A EVEN

## L2:

A

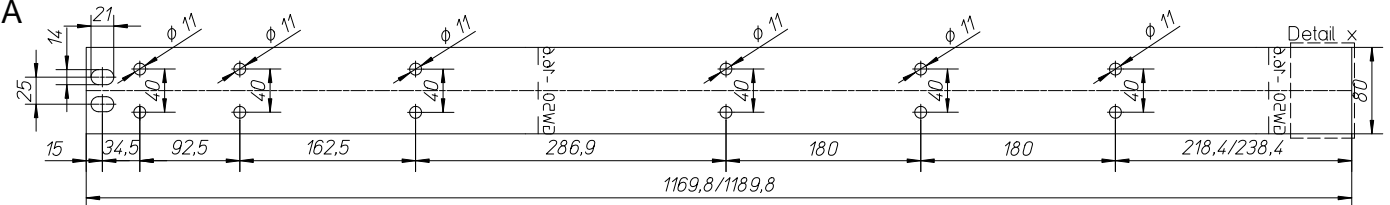


B

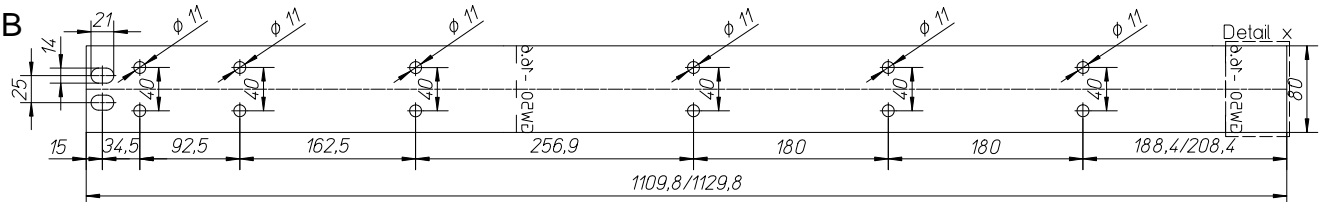


## L3:

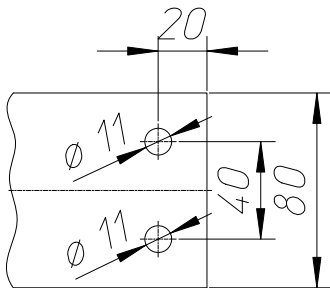
A



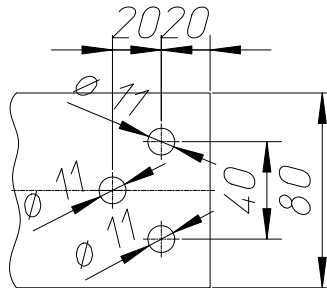
B



Detail x  
HSS mit 2 Cu-Schienen  
Main busbar with 2 Cu-bars



Detail x  
HSS mit 3 Cu-Schienen  
Main busbar with 3 Cu-bars



# Einspeise-, Abgangsfeld IZM20 Festeinbau 2000A Gl. S. incoming-, outgoing unit IZM20 fix 2000A EVEN

## Stückliste Abgangsschienenverbindung / parts list outgoing connection

Pos. no.	Menge quantity Tiefe / depth				Benennung name	Beschreibung specification	Bild picture
	600		800				
	3P	4P	3P	4P			
1	12 Stk/pcs	20 Stk/pcs	12 Stk/pcs	20 Stk/pcs	Sechskantschraube Hexagon head cap screw	DIN EN 24014 M10 x 50 – 8.8	
2	12 Stk/pcs	16 Stk/pcs	18 Stk/pcs	24 Stk/pcs	Sechskantschraube Hexagon head cap screw	DIN EN 24014 M10 x 70 – 8.8	
3	6 Stk/pcs	8 Stk/pcs	6 Stk/pcs	8 Stk/pcs	Flachrundschrube mit Vierkantansatz Saucer-head screw with square neck	DIN 603 M10 x 50 – 8.8	
4	54 Stk/pcs	80 Stk/pcs	66 Stk/pcs	96 Stk/pcs	Spannscheibe Conical spring washer for bolted connections	DIN 6796-10-FST	
5	30 Stk/pcs	44 Stk/pcs	36 Stk/pcs	52 Stk/pcs	Sechskantmutter Hexagon nut	DIN EN 24032 M10 – 8.8	
6	4 Stk/pcs	4 Stk/pcs	6 Stk/pcs	6 Stk/pcs	Sechskantschraube Hexagon head cap screw	DIN EN 24014 M8 x 45 – 8.8	
7	8 Stk/pcs	8 Stk/pcs	12 Stk/pcs	12 Stk/pcs	Spannscheibe Conical spring washer for bolted connections	DIN 6796-8-FST	
8	4 Stk/pcs	4 Stk/pcs	6 Stk/pcs	6 Stk/pcs	Sechskantmutter Hexagon nut	DIN EN 24032 M8 – 8.8	
9	2 Stk/pcs	2 Stk/pcs	2 Stk/pcs	2 Stk/pcs	Befestigungswinkel Fixing Bracket	XNBW-G BI 3,0 DIN59232 ST 02 Z275	
10	2 Stk/pcs	2 Stk/pcs	-	-	Befestigungswinkel Fixing Bracket	XNBW-E08 BI 3,0 DIN59232 ST 02 Z275	
11	-	-	2 Stk/pcs	2 Stk/pcs	Befestigungswinkel groß Fixing Bracket	XNBW-E08 BI 3,0 DIN59232 ST 02 Z275	
12	1 Stk/pcs	1 Stk/pcs	1 Stk/pcs	1 Stk/pcs	Stabilisator 50x10x80 stabilizer 50x10x80	HM2471 DIN7735	
13	1 Stk/pcs	-	1 Stk/pcs	-	Stabilisator 50x10x175 stabilizer 50x10x175	HM2471 DIN7735	
14	1 Stk/pcs	-	1 Stk/pcs	-	Stabilisator 50x10x270 stabilizer 50x10x270	HM2471 DIN7735	
15	-	3 Stk/pcs	-	3 Stk/pcs	Stabilisator 50x10x365 stabilizer 50x10x365	HM2471 DIN7735	
16	2 Stk/pcs	2 Stk/pcs	3 Stk/pcs	3 Stk/pcs	Stabilisator 30x30x490 Stabilizer 30x30x490	HM2471 DIN7735	

### Anzugsdrehmomente / stud torque

Gewindegröße Screw Size	Fertigung Mounting	Prüfung Test
M8	20 Nm	17 Nm
M10	40 Nm	37 Nm
M12	70 Nm	67 Nm